



THE WILLOWS
PRIMARY SCHOOL AND NURSERY



Friday 27th March 2026

Headteacher's Message

Dear parents and carers,

Just a quick one from me.

You'll have no doubt seen the article in the Echo (and various social media posts) about the visit of Richard Holden MP and various local dignitaries to the school on Monday to see for themselves the issues we have with parking and driving in Church Road.

Church Road at drop off and pick up has been a thorny issue for me since I took over as headteacher and I am fully committed to finding a solution. Monday was an important step and I intend to harness the support to push everyone to make changes.

Some of the changes have to be borne by us. We all have a responsibility to park and drive responsibly and legally. There is no point moaning to me about parking and then dropping your child off on a zig zag line or parking on double yellows!

I am convinced that we will have a plan and a solution soon, but we all still have a responsibility to make sure that we are doing the right things, both legally and morally.

The issue is getting a lot of traction and I think that we are all committed to a solution; watch this space!

Thanks for your support this term, have a great Easter and we will see you all on the other side.

Mr T Robinson

Headteacher

The Willows Primary School

The Willows Primary PTA

You can now find information on any of our events under the 'PTA Events' section on the contents page of the [PA connect app](#).



For more information, or to register your support please email: pta.thewillows@gmail.com.



WELL DONE!

1R Mollie for showing great effort in your learning both in school and at home.

1P Kody has worked really hard in all of his learning this week.

1C Amy is a super Willows citizen. She shows enthusiasm for learning and takes pride in completing tasks to the best of her ability.

Well done Amy :)

2D Emily strives for excellence in every aspect of her school life and is the most fantastic helper. Keep it up Emily!

2H Sofia for always putting so much effort into maths lessons.

2T Olivia always tries her best in everything that she does. She consistently wants to improve and is always doing work at home to show what she has learnt at school. Well done Olivia!

3SB Delilah for always putting in 100% effort into all her learning and persevering. Well done!

3D Mia for always having a smile on her face and putting 100% effort into all her lessons.

3S Adanna for always putting 100% effort into her work, persevering when it is tough.

4I Reggie For consistently showing great effort in all his learning and always trying his best in every task he takes on.

4E Daisy for showing a huge improvement in taking responsibility for her own learning. Well done!

4RH Harper for your exceptional effort in class, you have shown incredible perseverance, enthusiasm, and a brilliant attitude towards learning. Well done!

5F Jacob for always putting in a huge amount of effort to everything you do! You've made huge progress so far this year!

5J Eymen for showing incredible effort during English and Maths lessons this week, and always trying your absolute best.

5W Brendon for always putting great effort into all your work, in every subject! Your enthusiasm is wonderful!

6B Andrea for making a fantastic effort during test week to improve every score.

6H Oliver for consistently showing great effort in all aspects of his work across every subject, always trying his best and demonstrating a positive attitude towards learning.

6F Pippa for being a hardworking and well-mannered student. Pippa has and continues to make great progress everyday. Well done!



An extra special well done to all those children who are coming home with their 100% attendance certificates for the whole term!



Our Core Values: Respect, Responsibility, Courage, Hope, Justice, Compassion, Integrity, Wisdom

The vision of the Berlesduna Academy Trust is to create and foster a culture of high aspiration, enjoyment for learning, academic success and lifelong skills amongst all pupils, regardless of their social, economic or cultural background.



BERLESDUNA
ACADEMY TRUST



MERRYLANDS
PRIMARY SCHOOL AND NURSERY



WHITMORE
PRIMARY SCHOOL AND NURSERY



CRAYS HILL
PRIMARY SCHOOL



FELMORE
PRIMARY SCHOOL



CHERRY TREE
PRIMARY SCHOOL AND NURSERY



FAIRHOUSE
COMMUNITY PRIMARY SCHOOL



ST MARY'S CofE
PRIMARY SCHOOL

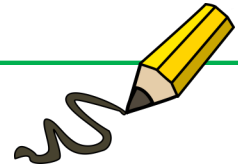
Superstar Readers of the Week

Yr1— Ruby, Annabelle, Evelyn
 Yr2 — Sofia, Millie, Piper-Lily
 Yr3 — Evie, Poppy, Lilly-Rose
 Yr4 — Konor, Giovanna, Amelia
 Yr5 — Aya, Annabelle, Autumn
 Yr 6— Emmanuel, Vlad, Isabelle



Superstar Writers of the Week

Yr1— Harry, Elsie, Rayden
 Yr2— Myles, Kyra, Marley-Jane
 Yr3 — Aiden, Uthman, Kairo
 Yr4 — Heitor, Nellie, Charlie
 Yr5 — Lennon, Nathaniel, Maykl
 Yr 6— Mayowa, Sophia, Sienna



Whole Class Superstar Readers of the Week

Key Stage 1: **1P-72** Lower Key Stage 2: **3S-52** Upper Key Stage 2: **5J-62**

OPAL

Laundry basket	Suitcase	Wooden spoons	Action figures	Plastic crates
Dress up items	Cars	Dinosaurs	Pans	Plastic dolls
Lego	Small balls	Scooter	Plastic tubes	Tarpaulin
Beach spades	Buckets	Trowels	Skateboard	Cardboard tubes
Guttering	Wooden planks	Helmet	Aprons	Chalk

Please try to keep these items in mind as these are the kinds of donations that our school needs as part of our Outdoor Play and Learning initiative. These items will make playtimes outside much more exciting, engaging and fun! Please give your child's class teacher any donations and these can then be passed on. Thank you for your ongoing support.

Kind regards,

**Miss Hudson and Miss Dorrington -
OPAL Leads**

OPAL Certificate this week

Oliver for working hard to tidy up equipment
and encouraging others to tidy.

Our Core Values: Respect, Responsibility, Courage, Hope, Justice, Compassion, Integrity, Wisdom

The vision of the Berlesduna Academy Trust is to create and foster a culture of high aspiration, enjoyment for learning, academic success and lifelong skills amongst all pupils, regardless of their social, economic or cultural background.





Attendance percentages

for this week.

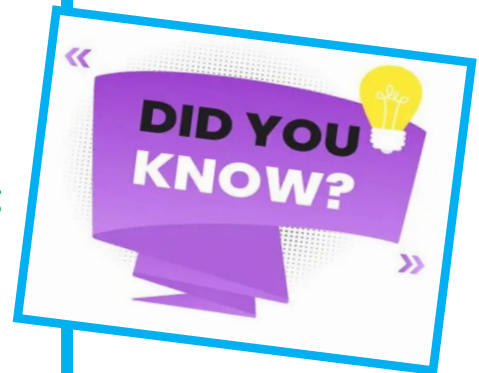
Yearly - 93.3% Weekly - 93.6%

KS1 – 93.1% KS2 - 94.1%

★ Attendance Matters!

- Children should aim for **at least 95% attendance** to make the most of their learning.
- Missing just **1 day a week = nearly 40 days of learning lost** in a year!

Arriving **on time every day** is just as important as being present.



Attendance Superstars!!!

This week, each of the children who have arrived to school every day and on time also received the extra special treat of our "Attendance Challenge Shop" where they had the opportunity to choose a prize for each week that they completed!

The children were all extremely excited to take part in this and enjoyed choosing their own rewards from a huge range of fun prizes.



Our Core Values: Respect, Responsibility, Courage, Hope, Justice, Compassion, Integrity, Wisdom

The vision of the Berlesduna Academy Trust is to create and foster a culture of high aspiration, enjoyment for learning, academic success and lifelong skills amongst all pupils, regardless of their social, economic or cultural background.



BERLESDUNA
ACADEMY TRUST



MERRYLANDS
PRIMARY SCHOOL AND NURSERY



WHITMORE
PRIMARY SCHOOL AND NURSERY



CRAYS HILL
PRIMARY SCHOOL



FELMORE
PRIMARY SCHOOL



CHERRY TREE
PRIMARY SCHOOL AND NURSERY



FAIRHOUSE
COMMUNITY PRIMARY SCHOOL



ST MARY'S CofE
PRIMARY SCHOOL

Reporting Absence

Please report your child's absence to the office by emailing admin@willows.essex.sch.uk, on your [PA connect app](#), or by leaving a message on the office telephone by calling 01268 470880.

The school must be informed **EVERY school day** that the child is absent.

Please ensure that you have reported your child's absence by **9.20am**.



Lateness

We have recently noticed an increase in the number of pupils arriving late to school. While we understand that some late arrivals are arranged or agreed with the Senior Leadership Team, there are a few children arriving where this is not the case.

Good punctuality helps children settle into the day calmly, take part in morning activities and hear important messages from their teacher. It is also an important life skill that supports children as they move through school and into the wider world.

We kindly ask for your support in helping your child arrive at school on time each day.

However, we do understand that there are any circumstances that can make this difficult, please do not hesitate to speak to the school office so we can support you where possible.

If you or your child have an appointment, or know that you will be arriving to school late for any other reason, **please inform the office via email your child's lunch choice for that day**. This is so the kitchen can be provided with the correct number of lunches. Should we not receive your lunch choice, we cannot guarantee your child will be able to have their preferred option. Should your child's choice be baguette, please state which filling they would like to have.

Thank you for your understanding.



Our Core Values: Respect, Responsibility, Courage, Hope, Justice, Compassion, Integrity, Wisdom

The vision of the Berlesduna Academy Trust is to create and foster a culture of high aspiration, enjoyment for learning, academic success and lifelong skills amongst all pupils, regardless of their social, economic or cultural background.



BERLESDUNA
ACADEMY TRUST



MERRYLANDS
PRIMARY SCHOOL AND NURSERY



WHITMORE
PRIMARY SCHOOL AND NURSERY



CRAYS HILL
PRIMARY SCHOOL



FELMORE
PRIMARY SCHOOL



CHERRY TREE
PRIMARY SCHOOL AND NURSERY



FAIRHOUSE
COMMUNITY PRIMARY SCHOOL



ST MARY'S CofE
PRIMARY SCHOOL



St Nicholas
Primary



Canewdon
Primary School



The autism fundraising event was yet again a great success, bringing awareness and acceptance of autism. The children had lots of fun whilst gaining knowledge to autism. We have raised an amazing **£1215** so far and counting! Thank you to Mrs Clay for her hard work.



An extra special well done to Dylan in 4E for his fantastic work of art!
He created this independently at home, well done Dylan!



We were absolutely blown away by all of the children's entries for the design an egg competition.

Choosing the winners was an extremely hard decision, but one child from each class was chosen by the PTA and those children will be coming home with a small prize!
Well done!



Our Core Values: Respect, Responsibility, Courage, Hope, Justice, Compassion, Integrity, Wisdom

The vision of the Berlesduna Academy Trust is to create and foster a culture of high aspiration, enjoyment for learning, academic success and lifelong skills amongst all pupils, regardless of their social, economic or cultural background.





Year 3/4 Football Match Report – vs St Teresa’s

The Year 3/4 football team played their final league game of the season against St Teresa’s, hoping to finish the campaign on a high. The team produced some of the best football they have played all season, with excellent passing and great teamwork throughout.

Svet controlled the midfield brilliantly, helping the team keep possession, while Teddie and Harrison caused constant problems on the wings. Up front, Oscar worked tirelessly to pressure their defence and was rewarded with the opening goal, giving the team a well deserved 1–0 lead at half time.

In the second half, Logan made several brilliant saves, while Lenny and Cameron remained calm and composed in defence. Enoch, Alex and Noah came on and brought great energy to the game, pushing the team forward and causing real problems for the opposition.

Unfortunately, St Teresa’s scored from a corner before adding two more goals, meaning the match finished 3–1. However, the scoreline did not reflect what was a fantastic performance from the team.

For many of the boys, this was their first time representing the school in football, and they should all be very proud of the effort, teamwork and determination they showed throughout the season.

Year 5/6 Football Report

On Thursday 26th March the year 5/6 boys football team played another league game away at Great Berry. It was a fiercely contested tie and for most of the game we trailed 2-1. In the end we went onto to lose but scored two fantastic goals and the boys showed real fight despite the fact we only had one substitute.

Our Core Values: Respect, Responsibility, Courage, Hope, Justice, Compassion, Integrity, Wisdom

The vision of the Berlesduna Academy Trust is to create and foster a culture of high aspiration, enjoyment for learning, academic success and lifelong skills amongst all pupils, regardless of their social, economic or cultural background.



BERLESDUNA
ACADEMY TRUST



MERRYLANDS
PRIMARY SCHOOL AND NURSERY



WHITMORE
PRIMARY SCHOOL AND NURSERY



CRAYS HILL
PRIMARY SCHOOL



FELMORE
PRIMARY SCHOOL



CHERRY TREE
PRIMARY SCHOOL AND NURSERY



FAIRHOUSE
COMMUNITY PRIMARY SCHOOL



ST MARY'S CofE
PRIMARY SCHOOL



We are delighted to share that we currently have spaces available in our Nursery for our September 2026 intake!

If your child is approaching nursery age and you are considering their next steps, this is a wonderful opportunity to join our friendly, nurturing, and engaging early years environment. Our Nursery provides a safe and stimulating setting where children can explore, learn, and grow through play-based activities led by our experienced and caring staff.

We welcome applications from families who would like their child to become part of our school community. If you are interested or would like more information, please contact the school office to request an application form.

We look forward to welcoming new families to The Willows Nursery!



Good luck to all of the Reception 2026 applicants.

Please remember offers will be sent via email on 16th April 2026.

All **late applications** need to apply via the gov website.

[Admission Common application - Essex County Council](#)

Should you know anyone who may like to apply for a place at The Willows, please tell them to contact the main office to arrange a tour of the school.

We will be more than happy to show them around :)

Our Core Values: Respect, Responsibility, Courage, Hope, Justice, Compassion, Integrity, Wisdom

The vision of the Berlesduna Academy Trust is to create and foster a culture of high aspiration, enjoyment for learning, academic success and lifelong skills amongst all pupils, regardless of their social, economic or cultural background.





Hopping by to
wish you a
very Happy
Easter!

Easter Holidays

Monday 30th March—Friday 10th April

Return to School

Monday 13th April

Our Core Values: Respect, Responsibility, Courage, Hope, Justice, Compassion, Integrity, Wisdom

The vision of the Berlesduna Academy Trust is to create and foster a culture of high aspiration, enjoyment for learning, academic success and lifelong skills amongst all pupils, regardless of their social, economic or cultural background.



BERLESDUNA
ACADEMY TRUST



MERRYLANDS
PRIMARY SCHOOL AND NURSERY



WHITMORE
PRIMARY SCHOOL AND NURSERY



CRAYS HILL
PRIMARY SCHOOL



FELMORE
PRIMARY SCHOOL



CHERRY TREE
PRIMARY SCHOOL AND NURSERY



FAIRHOUSE
COMMUNITY PRIMARY SCHOOL



ST MARY'S CofE
PRIMARY SCHOOL