



**THE WILLOWS**  
PRIMARY SCHOOL AND NURSERY



**Friday 20th March 2026**

### Headteacher's Message

Dear parents and carers,

Finally some sun! It has been a gorgeous week here at The Willows; when the sun comes out you can really appreciate the site and the green we have here. Late March to mid April sun warms your bones and soothes the soul.

Another busy week has passed. We had a visit from our MP Richard Holden who spoke with Key Stage 2 and then, bravely, took questions from the floor! Our children were brilliant, asking a range of questions from "What is Keir Starmer like?", to his opinions on the war in the Middle East! Richard answered them all. Knowing how democracy works in this country is important as understanding is key; seeing MPs in the real world is also good for the children. Richard will be back on Monday to help us fix our parking.

It is not long to the final term now (where has this year gone) and as the weather improves we should see illnesses decrease and attendance steadily rise. Please continue to support our drive for attendance.

Have a great weekend everyone,

Mr T Robinson

Headteacher

The Willows Primary School



#### BERLESDUNA ACADEMY TRUST – VACANCIES

CHERRY TREE – EYFS TEACHER closing date 14<sup>th</sup> April  
FAIRHOUSE – SEN LEARNING SUPPORT ASSISTANT closing date 23<sup>rd</sup> March  
FAIRHOUSE – CLASS TEACHER closing date 14<sup>th</sup> April  
MERRYLANDS – LEAD TEACHER for AUTISM SPECTRUM CONDITIONS closing date 19<sup>th</sup> April  
MERRYLANDS – CATERING ASSISTANT closing date 17<sup>th</sup> April  
WHITMORE – CLASS TEACHER closing date 22<sup>nd</sup> March  
WILLOWS – CLASS TEACHER closing date 24<sup>th</sup> April

For more information and to apply for any of these exciting opportunities, please follow the link to our website [Vacancies - Berlesduna Academy Trust](#)

### The Willows Primary PTA

You can now find information on any of our events under the 'PTA Events' section on the contents page of the [PA connect app](#).



For more information, or to register your support please email: [pta.thewillows@gmail.com](mailto:pta.thewillows@gmail.com).



# WELL DONE!

**1R Finley** for showing kindness and caring for others in our class.

**1P Arthur** for always being kind to your friends and looking after others when they are sad.

**1C Luna** is a kind and helpful classmate who shows empathy towards others. She treats everyone with respect and is a great friend. Well done Luna :)

**2D Darcey** is always caring and being considerate to her friends. Well done Darcey!

**2H Kairie** for always showing care and kindness towards your friends. Well done!

**2T Omarih** is a kind and caring boy who looks after his friends. He is always looking out for others and will do anything for anyone. Keep it up Omarih!

**3SB Elliot** for being a kind, polite and caring member of the class. Well done!

**3D Clementine** for always being such a kind and thoughtful member of the class.

**3S Alex** for always being caring and supportive, Alex is able to clearly articulate support to his friends to help them succeed.



**4I Antonia** for her caring attitude and for always helping others with a smile.

**4E Mahi** for always being kind and caring towards her peers.

**4RH Bonnie** for always showing kindness and care towards others, and for being a thoughtful and supportive member of our class community. Well done!

**5F Joshua** for always being a kind and caring member of the class, who has an excellent smile, which lights up the room!

**5J David** for always showing great care towards others!

**5W Elsie** for being a kind and caring member of the classroom, always looking out for others, as well as always taking great care with her work.

**6B George** for achieving an outstanding 100% score in Maths SATs practice.

**6H Holly-Mae** for always showing great care towards others in the classroom, being a great friend to all and looking out for other children!

**6F Bradley** for being a kind and caring boy who always demonstrates in enthusiasm with what he does. Our school would not be the same without Bradley. Well done!

## Whole Class Superstar Readers of the Week

**Key Stage 1: 2D—63   Lower Key Stage 2: 3S-78   Upper Key Stage 2: 5J-90**

Our Core Values: Respect, Responsibility, Courage, Hope, Justice, Compassion, Integrity, Wisdom

The vision of the Berlesduna Academy Trust is to create and foster a culture of high aspiration, enjoyment for learning, academic success and lifelong skills amongst all pupils, regardless of their social, economic or cultural background.



**BERLESDUNA**  
ACADEMY TRUST



**MERRYLANDS**  
PRIMARY SCHOOL AND NURSERY



**WHITMORE**  
PRIMARY SCHOOL AND NURSERY



**CRAYS HILL**  
PRIMARY SCHOOL



**FELMORE**  
PRIMARY SCHOOL



**CHERRY TREE**  
PRIMARY SCHOOL AND NURSERY



**FAIRHOUSE**  
COMMUNITY PRIMARY SCHOOL



**ST MARY'S CofE**  
PRIMARY SCHOOL

## Superstar Readers of the Week

Yr1— Ezmae, Lorissa, Chiamaka

Yr2 — Theo, Sofiia, Poppy

Yr3 — Layla, Franklin, Maxim

Yr4 — Mila, Amy, Emily

Yr5 — Stephen, Mekaal, Daniil

Yr 6— Chibugo, Felix, Evelina



## Superstar Writers of the Week

Yr1— Matthew, Parker, Halei-Jane

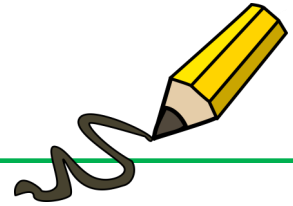
Yr2— Danny, Arnie, Ruby

Yr3 — Georgie, Sonny, Miller

Yr4 — Leighton, Charlotte, Ronnie

Yr5 — Danny, Gracie, Macie

Yr 6— Florence, Poppy, Emmanuel



# OPAL

Laundry basket 	Suitcase 	Wooden spoons 	Action figures 	Plastic crates 
Dress up items 	Cars 	Dinosaurs 	Pans 	Plastic dolls 
Lego 	Small balls 	Scooter 	Plastic tubes 	Tarpaulin 
Beach spades 	Buckets 	Trowels 	Skateboard 	Cardboard tubes 
Guttering 	Wooden planks 	Helmet 	Aprons 	Chalk 

Please try to keep these items in mind as these are the kinds of donations that our school needs as part of our Outdoor Play and Learning initiative. These items will make playtimes outside much more exciting, engaging and fun! Please give your child's class teacher any donations and these can then be passed on. Thank you for your ongoing support.

Kind regards,

**Miss Hudson and Miss Dorrington -  
OPAL Leads**

## OPAL Certificate this week

**Halei-Jane** for working hard to tidy up equipment  
and encouraging others to tidy.

Our Core Values: Respect, Responsibility, Courage, Hope, Justice, Compassion, Integrity, Wisdom

The vision of the Berlesduna Academy Trust is to create and foster a culture of high aspiration, enjoyment for learning, academic success and lifelong skills amongst all pupils, regardless of their social, economic or cultural background.



**BERLESDUNA**  
ACADEMY TRUST



**MERRYLANDS**  
PRIMARY SCHOOL AND NURSERY



**WHITMORE**  
PRIMARY SCHOOL AND NURSERY



**CRAYS HILL**  
PRIMARY SCHOOL



**FELMORE**  
PRIMARY SCHOOL



**CHERRY TREE**  
PRIMARY SCHOOL AND NURSERY



**FAIRHOUSE**  
COMMUNITY PRIMARY SCHOOL



**ST MARY'S CofE**  
PRIMARY SCHOOL

## Attendance percentages

### for this week.

Yearly - 93.3% Weekly - 93.4%

KS1 – 92.5% KS2 - 93.8%



Essex County Council  
Education

# HERO

Here, every day, ready and on time

### Minutes lost per day

5 minutes 10 minutes 15 minutes 20 minutes 25 minutes

equates to a yearly loss of:



Five minutes late per day adds up to three learning days lost in a school year

If 15 minutes late each day you will miss two full weeks of school in one year

Poor timekeeping means less chance of success!

### Attendance Categories

Percentage	Category	Definition	Band
97-100%	Excellent	Attendance is excellent. Recognition given.	A
95-97%	Acceptable	Attendance is acceptable.	B
93-94%	Below Expected	Attendance needs to improve. Form Tutors intervene to motivate pupils to reach their target.	C
90-92%	At risk	Attendance is at risk of falling below 90%. This is when a pupil is classed as persistently absent. The Head of Year will intervene.	D
80-89%	Support	HOY and Pastoral Support will intervene to improve attendance as the pupil is persistently absent from school. • Parents will be notified of concerns. • Meetings will be held to identify issues and support needed. • Penalty notices may be issued to parents.	E
51-79%	Intervention	HOY, Pastoral Support and Attendance Enforcement officers will intervene to improve attendance. • Parent meetings will be held • Penalty notices may be issued to parents • Enforcement Officers may be deployed to improve attendance.	F
Under 50%	Severely Absent	Attendance is a serious concern and requires individualised plans to improve. Attendance Enforcement will work closely with school and other social care agencies to improve attendance.	G

Our Core Values: Respect, Responsibility, Courage, Hope, Justice, Compassion, Integrity, Wisdom

The vision of the Berlesduna Academy Trust is to create and foster a culture of high aspiration, enjoyment for learning, academic success and lifelong skills amongst all pupils, regardless of their social, economic or cultural background.



BERLESDUNA  
ACADEMY TRUST



MERRYLANDS  
PRIMARY SCHOOL AND NURSERY



WHITMORE  
PRIMARY SCHOOL AND NURSERY



CRAYS HILL  
PRIMARY SCHOOL



FELMORE  
PRIMARY SCHOOL



CHERRY TREE  
PRIMARY SCHOOL AND NURSERY



FAIRHOUSE  
COMMUNITY PRIMARY SCHOOL



ST MARY'S CofE  
PRIMARY SCHOOL

## Reporting Absence

Please report your child's absence to the office by emailing [admin@willows.essex.sch.uk](mailto:admin@willows.essex.sch.uk), on your [PA connect app](#), or by leaving a message on the office telephone by calling 01268 470880.

The school must be informed **EVERY school day** that the child is absent.

Please ensure that you have reported your child's absence by **9.20am**.



## Lateness

We have recently noticed an increase in the number of pupils arriving late to school. While we understand that some late arrivals are arranged or agreed with the Senior Leadership Team, there are a few children arriving where this is not the case.

Good punctuality helps children settle into the day calmly, take part in morning activities and hear important messages from their teacher. It is also an important life skill that supports children as they move through school and into the wider world.

We kindly ask for your support in helping your child arrive at school on time each day.

However, we do understand that there are any circumstances that can make this difficult, please do not hesitate to speak to the school office so we can support you where possible.

If you or your child have an appointment, or know that you will be arriving to school late for any other reason, **please inform the office via email your child's lunch choice for that day**. This is so the kitchen can be provided with the correct number of lunches. Should we not receive your lunch choice, we cannot guarantee your child will be able to have their preferred option. Should your child's choice be baguette, please state which filling they would like to have.

Thank you for your understanding.



Our Core Values: Respect, Responsibility, Courage, Hope, Justice, Compassion, Integrity, Wisdom

The vision of the Berlesduna Academy Trust is to create and foster a culture of high aspiration, enjoyment for learning, academic success and lifelong skills amongst all pupils, regardless of their social, economic or cultural background.



**BERLESDUNA**  
ACADEMY TRUST



**MERRYLANDS**  
PRIMARY SCHOOL AND NURSERY



**WHITMORE**  
PRIMARY SCHOOL AND NURSERY



**CRAYS HILL**  
PRIMARY SCHOOL



**FELMORE**  
PRIMARY SCHOOL



**CHERRY TREE**  
PRIMARY SCHOOL AND NURSERY



**FAIRHOUSE**  
COMMUNITY PRIMARY SCHOOL



**ST MARY'S CofE**  
PRIMARY SCHOOL



**St Nicholas**  
Primary



**Canewdon**  
Primary School

# DATES TO REMEMBER

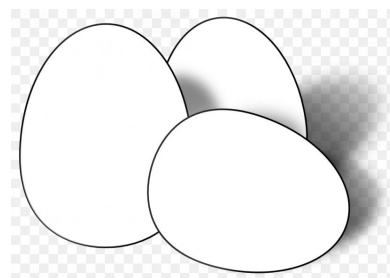
Autism acceptance week	23 <sup>rd</sup> March
KS2 choir Music festival practice	23 <sup>rd</sup> March
Music concert with Mr Coulson	25 <sup>th</sup> March
Yr 6 trip to Cineworld	27 <sup>th</sup> March
Nursery craft session	27 <sup>th</sup> March
Last day of term dress down	27 <sup>th</sup> March
Easter holidays	30 <sup>th</sup> March - 12 <sup>th</sup> April



## Easter Competition!

We cannot wait to see all of the children's amazing designs!

Good Luck!



Our Core Values: Respect, Responsibility, Courage, Hope, Justice, Compassion, Integrity, Wisdom

The vision of the Berlesduna Academy Trust is to create and foster a culture of high aspiration, enjoyment for learning, academic success and lifelong skills amongst all pupils, regardless of their social, economic or cultural background.





We are delighted to share that we currently have spaces available in our Nursery for our September 2026 intake!

If your child is approaching nursery age and you are considering their next steps, this is a wonderful opportunity to join our friendly, nurturing, and engaging early years environment. Our Nursery provides a safe and stimulating setting where children can explore, learn, and grow through play-based activities led by our experienced and caring staff.

We welcome applications from families who would like their child to become part of our school community. If you are interested or would like more information, please contact the school office to request an application form.

We look forward to welcoming new families to The Willows Nursery!



Good luck to all of the Reception 2026 applicants.

Please remember offers will be sent via email on 16th April 2026.

All **late applications** need to apply via the gov website.

[Admission Common application - Essex County Council](#)

**Should you know anyone who may like to apply for a place at The Willows, please tell them to contact the main office to arrange a tour of the school.**

**We will be more than happy to show them around :)**

Our Core Values: Respect, Responsibility, Courage, Hope, Justice, Compassion, Integrity, Wisdom

The vision of the Berlesduna Academy Trust is to create and foster a culture of high aspiration, enjoyment for learning, academic success and lifelong skills amongst all pupils, regardless of their social, economic or cultural background.



**BERLESDUNA**  
ACADEMY TRUST



**MERRYLANDS**  
PRIMARY SCHOOL AND NURSERY



**WHITMORE**  
PRIMARY SCHOOL AND NURSERY



**CRAYS HILL**  
PRIMARY SCHOOL



**FELMORE**  
PRIMARY SCHOOL



**CHERRY TREE**  
PRIMARY SCHOOL AND NURSERY



**FAIRHOUSE**  
COMMUNITY PRIMARY SCHOOL



**ST MARY'S CofE**  
PRIMARY SCHOOL