



THE WILLOWS
PRIMARY SCHOOL AND NURSERY



Friday 13th March 2026

Headteacher's Message

Dear parents and carers,

Another week has flown by and we are inching towards Easter! We have had every weather type thrown at us this week, from rain to sun with wind chucked in for good measure. I am hoping that Easter brings us the usual clear, warmer weather.

Individual class photos in a class setting have been done and they will look lovely. Please consider signing up for the Happy Days subscription as it is really good value, especially if you have more than one child in our school.

I want to thank the PTA for their hard work setting up, organising and running the Mother's Day sale. It went brilliantly and it is so good to see more and more parents helping out. They can always do with more, so contact them using the details on the newsletter and offer your support!

Finally, a little reminder about using Class Charts. There are multiple ways to contact the school, and depending on your need some are more appropriate than others. Class Charts shouldn't be used for long messages needing a detailed response from the teacher or school. Please use email for that. Remember, teachers may not see your message on Class Charts until the next day.

Have a great weekend everyone,

Mr T Robinson

Headteacher

The Willows Primary School

The Willows Primary PTA

You can now find information on any of our events under the '**PTA Events**' section on the contents page of the **PA connect app**.



For more information, or to register your support please email: pta.thewillows@gmail.com.



WELL DONE!

1R Kaleb for building a fantastic nest during Science Week.

1P Archie has loved science week this week! He made a fantastic playdough dinosaur focusing on what features (claws) it would have and why. Archie, was also keen to talk about what his dinosaur would eat and tried to use the correct scientific vocabulary.

1C Letty has tried extremely hard during Science week this week. She has shown curiosity and super observational skills. Well done Letty :)

2D Riccardo shows such a fantastic interest in Science and has great knowledge of our current plant topic. Keep it up Riccardo!

2H Sonny for always being so inquisitive during science lessons and always wanting to carry out experiments. You have shown a great understanding of how a seed becomes a plant and what plants need to grow. Well done!

2T Rain is a keen scientist who loves to learn about the world we live in. This week, Rain has been learning about what a plant needs to grow and has carried out an investigation to find out how important light is to a plant.

3SB River for demonstrating excellent testing and knowledge skills about animals during Science Week.

3D Bella for working hard to identify vertebrates and invertebrates during our science week lessons.

3S Sunshine for demonstrating a curious mind and trying to link her learning during Science to show her understanding.



4I Noah for his excellent curiosity and enthusiasm in science. He approaches investigations with excitement and always enjoys discovering how the world works.

4E Oscar for showing huge enthusiasm for science and asking insightful and thought-provoking questions.

4RH Ethan for showing fantastic enthusiasm for science and maths, and for always asking thoughtful questions that demonstrate his wonderful curiosity about how the world works. Well done!

5F Olly for always asking inquisitive questions throughout Science investigations and for using his oracy symbols to build on answers. Well done!

5J Charlotte for showing great enthusiasm when taking part in our lessons for Science Week this week!

5W Chimeremeze for always showing great enthusiasm during our science lessons - always getting really involved when we do our experiments!

6B Daniella for her superb scientific explanations and detailed diagrams.

6H Daniel for showing fantastic curiosity and enthusiasm during Science Week. Asking thoughtful questions, exploring new ideas with confidence and demonstrating a great scientific attitude throughout our investigations.

6F Elsie for working hard consistently across the whole of year 6. Elsie always demonstrates the right attitude towards her learning and others. Well done!

Our Core Values: Respect, Responsibility, Courage, Hope, Justice, Compassion, Integrity, Wisdom

The vision of the Berlesduna Academy Trust is to create and foster a culture of high aspiration, enjoyment for learning, academic success and lifelong skills amongst all pupils, regardless of their social, economic or cultural background.



BERLESDUNA
ACADEMY TRUST



MERRYLANDS
PRIMARY SCHOOL AND NURSERY



WHITMORE
PRIMARY SCHOOL AND NURSERY



CRAYS HILL
PRIMARY SCHOOL



FELMORE
PRIMARY SCHOOL



CHERRY TREE
PRIMARY SCHOOL AND NURSERY



FAIRHOUSE
COMMUNITY PRIMARY SCHOOL



ST MARY'S CofE
PRIMARY SCHOOL

Superstar Readers of the Week

Yr1— Jesse, Elsie, Ioana

Yr2 — Alessia, Dottie,

Yr3 — Noah, Lillie, Dollimai

Yr4 — Theo, Victoria, Leo

Yr5 — Jorgie, Monty, Emily

Yr 6— Anya, Brody, Devon



Superstar Writers of the Week

Yr1— Vincent, Erin, Anna

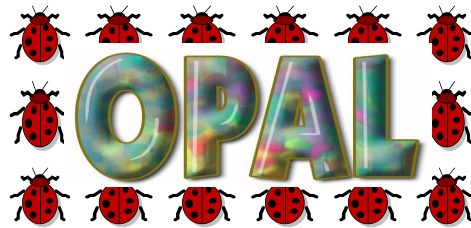
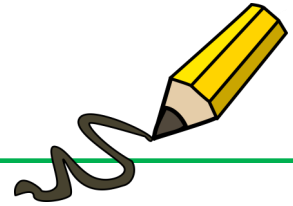
Yr2— Aaliyah, Mia, Finley

Yr3 — Amayah, Kajetan, Isaac

Yr4 — Nelly, Svetoslav, Sienna

Yr5 — Jacob, Aariz, Jayda

Yr 6— Lena, Smilte, Lena



Laundry basket 	Suitcase 	Wooden spoons 	Action figures 	Plastic crates 
Dress up items 	Cars 	Dinosaurs 	Pans 	Plastic dolls 
Lego 	Small balls 	Scooter 	Plastic tubes 	Tarpaulin 
Beach spades 	Buckets 	Trowels 	Skateboard 	Cardboard tubes 
Guttering 	Wooden planks 	Helmet 	Aprons 	Chalk 

Please try to keep these items in mind as these are the kinds of donations that our school needs as part of our Outdoor Play and Learning initiative. These items will make playtimes outside much more exciting, engaging and fun! Please give your child's class teacher any donations and these can then be passed on. Thank you for your ongoing support.

Kind regards,

**Miss Hudson and Miss Dorrington -
OPAL Leads**

OPAL Certificate this week

Jacob for working hard to tidy up equipment
and encouraging others to tidy.

Our Core Values: Respect, Responsibility, Courage, Hope, Justice, Compassion, Integrity, Wisdom

The vision of the Berlesduna Academy Trust is to create and foster a culture of high aspiration, enjoyment for learning, academic success and lifelong skills amongst all pupils, regardless of their social, economic or cultural background.



CHERRY TREE
PRIMARY SCHOOL AND NURSERY



FAIRHOUSE
COMMUNITY PRIMARY SCHOOL



ST MARY'S CofE
PRIMARY SCHOOL



BERLESDUNA
ACADEMY TRUST



MERRYLANDS
PRIMARY SCHOOL AND NURSERY



WHITMORE
PRIMARY SCHOOL AND NURSERY



CRAYS HILL
PRIMARY SCHOOL



FELMORE
PRIMARY SCHOOL



Attendance percentages

for this week.

Yearly - 93.3% Weekly - 93.5%

KS1 – 92.7% KS2 - 93.8%

Classroom Award

Congratulations to

3S

for achieving the highest attendance this week at 97.1%!

Descriptor	Threshold attendance	Actual attendance	Whole days of absence	Learning Hours Lost
Excellent	100%	190 days	0	0
	99%	188 days	2	10
Good	98%	186 days	4	20
	97%	184 days	6	30
	96%	182.5 days	7.5	37.5
Cause for Concern	95%	180.5 days	9.5	47.5
	94%	179 days	11	55
	93%	177 days	13	65
	92%	175 days	15	75
Unsatisfactory	91%	173 days	17	85
	90%	171 days	19	95
	89%	169 days	21	105
	88%	167 days	23	115
Serious cause for concern	87%	165 days	25	125
	86%	163 days	27	135
Critical	85%	161.5 days	28.5	142.5
	84%	159.5 days	30.5	152.5
	83%	158 days	32	160
	82%	156 days	34	170
	81%	154 days	36	180
	80%	152 days	38	190

Our Core Values: Respect, Responsibility, Courage, Hope, Justice, Compassion, Integrity, Wisdom

The vision of the Berlesduna Academy Trust is to create and foster a culture of high aspiration, enjoyment for learning, academic success and lifelong skills amongst all pupils, regardless of their social, economic or cultural background.

Reporting Absence

Please report your child's absence to the office by emailing admin@willows.essex.sch.uk or by leaving a message on the office telephone by calling 01268 470880.



The school must be informed **EVERY school day** that the child is absent.



Lateness

We have recently noticed an increase in the number of pupils arriving late to school. While we understand that some late arrivals are arranged or agreed with the Senior Leadership Team, there are a few children arriving where this is not the case.

Good punctuality helps children settle into the day calmly, take part in morning activities and hear important messages from their teacher. It is also an important life skill that supports children as they move through school and into the wider world.

We kindly ask for your support in helping your child arrive at school on time each day.

However, we do understand that there are any circumstances that can make this difficult, please do not hesitate to speak to the school office so we can support you where possible.

If you or your child have an appointment, or know that you will be arriving to school late for any other reason, **please inform the office via email your child's lunch choice for that day**. This is so the kitchen can be provided with the correct number of lunches. Should we not receive your lunch choice, we cannot guarantee your child will be able to have their preferred option. Should your child's choice be baguette, please state which filling they would like to have.

Thank you for your understanding.



Our Core Values: Respect, Responsibility, Courage, Hope, Justice, Compassion, Integrity, Wisdom

The vision of the Berlesduna Academy Trust is to create and foster a culture of high aspiration, enjoyment for learning, academic success and lifelong skills amongst all pupils, regardless of their social, economic or cultural background.



BERLESDUNA
ACADEMY TRUST



MERRYLANDS
PRIMARY SCHOOL AND NURSERY



WHITMORE
PRIMARY SCHOOL AND NURSERY



CRAYS HILL
PRIMARY SCHOOL



FELMORE
PRIMARY SCHOOL



CHERRY TREE
PRIMARY SCHOOL AND NURSERY



FAIRHOUSE
COMMUNITY PRIMARY SCHOOL



ST MARY'S CofE
PRIMARY SCHOOL



St Nicholas
Primary



Canewdon
Primary School



Year 6 Netball Match Report match at home 12/03/26

The Year 6 netball team put in a fantastic performance in their second match against Lincewood.

The Willows started strongly, showing great determination and teamwork, and by half-time the score was level at **2–2**, reflecting just how hard they fought throughout the first two quarters.

In the second half, despite continued effort and excellent defending, Lincewood managed to secure three additional goals. The final score was **5–2 to Lincewood**, but our players should be extremely proud of their resilience, sportsmanship, and commitment right to the final whistle.

Well done, Year 6—you represented
The Willows brilliantly!



The year5/6 football team played their second game of the season on Tuesday afternoon away at Eversley. The boys played some excellent football on one of the biggest pitches I have ever seen a team play on. We scored 3 goals but ultimately this was not enough to secure the 3 points. We were very proud of their fight and determination.



BERLESDUNA ACADEMY TRUST – VACANCIES

CHERRY TREE – EYFS TEACHER closing date 14th April
MERRYLANDS – CLEANER closing date 8th March
FAIRHOUSE – SEN LEARNING SUPPORT ASSISTANT closing date 23rd March
FAIRHOUSE – CLASS TEACHER closing date 14th April
MERRYLANDS – LEAD TEACHER for AUTISM SPECTRUM CONDITIONS closing date 19th April
WHITMORE – ASSISTANT HEADTEACHER closing date 16th March
WHITMORE – CLASS TEACHER closing date 22nd March

For more information and to apply for any of these exciting opportunities, please follow the link to our website [Vacancies - Berlesduna Academy Trust](#)

Whole Class Superstar Readers of the Week

Key Stage 1: 1C-74 Lower Key Stage 2: 3S & 4E-68 Upper Key Stage 2: 5J-90

Our Core Values: Respect, Responsibility, Courage, Hope, Justice, Compassion, Integrity, Wisdom

The vision of the Berlesduna Academy Trust is to create and foster a culture of high aspiration, enjoyment for learning, academic success and lifelong skills amongst all pupils, regardless of their social, economic or cultural background.



BERLESDUNA
ACADEMY TRUST



MERRYLANDS
PRIMARY SCHOOL AND NURSERY



WHITMORE
PRIMARY SCHOOL AND NURSERY



CRAYS HILL
PRIMARY SCHOOL



FELMORE
PRIMARY SCHOOL



CHERRY TREE
PRIMARY SCHOOL AND NURSERY



FAIRHOUSE
COMMUNITY PRIMARY SCHOOL



ST MARY'S CofE
PRIMARY SCHOOL

DATES TO REMEMBER



Young carers day	16 th March
Theatre visit Yr 5	18 th March
Richard Holden MP visit	19 th March
Royal ballet & opera	19 th March
Yr 1 reading café	19 th March
Autism acceptance week	23 rd March
KS2 choir Music festival practice	23 rd March
Music concert with Mr Coulson	25 th March
Yr 6 trip to Cineworld	27 th March
Nursery craft session	27 th March
Last day of term dress down	27 th March
Easter holidays	30 th March - 12 th April



We are delighted to share that we currently have spaces available in our Nursery for our September 2026 intake!

If your child is approaching nursery age and you are considering their next steps, this is a wonderful opportunity to join our friendly, nurturing, and engaging early years environment. Our Nursery provides a safe and stimulating setting where children can explore, learn, and grow through play-based activities led by our experienced and caring staff.

We welcome applications from families who would like their child to become part of our school community. If you are interested or would like more information, please contact the school office to request an application form.

We look forward to welcoming new families to The Willows Nursery!

Our Core Values: Respect, Responsibility, Courage, Hope, Justice, Compassion, Integrity, Wisdom

The vision of the Berlesduna Academy Trust is to create and foster a culture of high aspiration, enjoyment for learning, academic success and lifelong skills amongst all pupils, regardless of their social, economic or cultural background.



Starting Reception Roadshows



Is Your Little One Starting Reception in September 2026?

Come along to our Starting Reception Roadshow!

Get ready for a fun, friendly, and totally **FREE** event designed to help you to support your child feel excited and confident about starting reception.

Essex Early Years has teamed up with local schools plus education, health and care partners to bring you a lively, helpful session packed with top tips and advice.

Want to join in?

Ask your child's childminder, preschool, or nursery for details about your nearest event, or visit the Essex Talk, Listen and Cuddle website to find out more about dates and times across Essex.

Starting Reception Roadshow near you:

Where: Janet Duke Primary School - 105 Markhams Chase, Basildon SS15 5LS

When: Wednesday 18th March - 6pm - 7.30pm



You can find out information about the event by scanning the QR code or visiting www.tlc-essex.info and searching 'Starting reception'



Follow us on social media to join our **Starting Reception Campaign**



Instagram



Facebook



Our Core Values: Respect, Responsibility, Courage, Hope, Justice, Compassion, Integrity, Wisdom

The vision of the Berlesduna Academy Trust is to create and foster a culture of high aspiration, enjoyment for learning, academic success and lifelong skills amongst all pupils, regardless of their social, economic or cultural background.



BERLEDUNA
ACADEMY TRUST



MERRYLANDS
PRIMARY SCHOOL AND NURSERY



WHITMORE
PRIMARY SCHOOL AND NURSERY



CRAYS HILL
PRIMARY SCHOOL



FELMORE
PRIMARY SCHOOL



CHERRY TREE
PRIMARY SCHOOL AND NURSERY



FAIRHOUSE
COMMUNITY PRIMARY SCHOOL



ST MARY'S CofE
PRIMARY SCHOOL