



THE WILLOWS
PRIMARY SCHOOL AND NURSERY



Friday 6th March 2026

Headteacher's Message

Dear parents and carers,

This week has provided another glimpse of Summer; warmer, longer days are definitely on their way!

Thank you to everyone who attended our Spring parents' evening. It was wonderful to see you all and thank you to everyone who was so positive about the school. To those that raised genuine issues, thank you for taking the time to share your experiences and for doing it in a constructive way. Remember what I always say, we are one big family here and, like all families, we pull together when we have to help each other. Parents' evenings are important in building relationships and fostering belonging in a school; thank you for attending.

This is a very short half term (just three weeks to go) and so it is really important to focus on attendance and punctuality. Please try to maximise attendance, sniffles and coughs are fine; let us see how they get on. Equally important is to talk to us if you feel there are barriers to attendance. We can help and we have huge scope to try lots of things!

As the weather improves please let's use it as an excuse to walk to school, park further away and walk, or cycle and scooter and stop Church Road being a problematic road!

Enjoy the warmer weather everyone, have a great weekend and we will see you all on Monday,

Mr T Robinson

Headteacher

The Willows Primary School

BERLESDUNA
ACADEMY TRUST

BERLESDUNA ACADEMY TRUST – VACANCIES

CANEWDON – CARETAKER closing date 9th March
CHERRY TREE – EYFS TEACHER closing date 8th March
DOWNHAM – CLASS TEACHER closing date 12th March
MERRYLANDS – CLEANER closing date 8th March
WHITMORE – ASSISTANT HEADTEACHER closing date 16th March
WHITMORE – CLASS TEACHER closing date 22nd March

For more information and to apply for any of these exciting opportunities, please follow the link to our website [Vacancies – Berlesduna Academy Trust](#)

The Willows Primary PTA

You can now find information on any of our events under the 'PTA Events' section on the contents page of the [PA connect app](#).



For more information, or to register your support please email: pta.thewillows@gmail.com.



WELL DONE!

1R Halei-Jane for exploring and enjoying different stories in the book corner.

1P Theo has loved going to the reading corner this week and reading a book to himself. Well done!

1C Nicolas has been trying extremely hard with his reading this week. He has been putting 100% into rapid phonics and has been amazing his teachers. Well done Nicolas :)

2D Leo is always impressing us with his interests in books and stories– even making up his own with his own characters. Fantastic Leo!

2H Elza for always challenging yourself within shared reading lessons to successfully complete extension tasks by going back to the book and finding key information. Well done!

2T Tilly-Mai has been working hard to improve her reading by reading at home, trying her best in her rapid phonics sessions and reading daily with Miss Gunner. Keep it up Tilly-Mai!

3SB Roman for joining in with World Book Day our ‘buddy reading’ activity so sensibly with his partner.

3D Cesar for his continued effort with his reading in all lessons and at home.

3S Patrick for developing more flow and expression in his reading, leading to a level up!



4I Joury for her amazing progress with reading. Jo Jo has shown great determination with genuine enjoyment. Keep up the great work!

4E Ronnie for having a strong love of reading and eloquently sharing his favourite books with us.

4RH Mayra for demonstrating outstanding passion and enthusiasm for reading, and for embracing books as a source of joy, imagination, and lifelong learning. Well done!

5F Tina for always taking every opportunity she can to read and also sharing her own personal books with her friends, so they can read them too!

5J Jenson for making an excellent start to the school this week and showing enthusiasm for reading during World Book Week!

5W Daisy for all the amazing progress in reading this year, you are doing so well!

6B Katy for sharing her enthusiasm and enjoyment of reading graphic novels.

6H Eesha for working extremely hard with her reading work this week! She has taken a lot of care and time with her work.

6F Matthew for working hard consistently across the whole of year 6. I am sure you will reach your goal of getting into Cambridge/ Oxford. Well done!



Whole Class Superstar Readers of the Week

Key Stage 1: 2T –72 Lower Key Stage 2: 3S-71 Upper Key Stage 2: 5J-88

Our Core Values: Respect, Responsibility, Courage, Hope, Justice, Compassion, Integrity, Wisdom

The vision of the Berlesduna Academy Trust is to create and foster a culture of high aspiration, enjoyment for learning, academic success and lifelong skills amongst all pupils, regardless of their social, economic or cultural background.



BERLESDUNA
ACADEMY TRUST



MERRYLANDS
PRIMARY SCHOOL



WHITMORE
PRIMARY SCHOOL



CRAYS HILL
PRIMARY SCHOOL



FELMORE
PRIMARY SCHOOL



CHERRY TREE
PRIMARY SCHOOL



FAIRHOUSE
PRIMARY SCHOOL



ST MARY'S C of E
PRIMARY SCHOOL

Superstar Readers of the Week

Yr1— Harry, Amelia, Luna

Yr2 — Poppy, Leo, Scarlett

Yr3 — Willow, Julia, Maxim

Yr4 — Eileen, Emily, Camilla

Yr5 — Eliza, Meghna, Daniel

Yr 6— Zoe, Poppy, Macie



Superstar Writers of the Week

Yr1— Carter, Maria, Theo

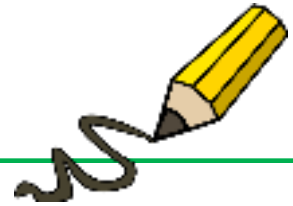
Yr2— Ava, Hannah, Connor

Yr3 — Harrison, Delilah, Anaya

Yr4 — Lenny, Ibrahim, Hudson

Yr5 — Ronnie, Charles, Vincent

Yr 6— Archie, Owen, Esme



Laundry basket 	Suitcase 	Wooden spoons 	Action figures 	Plastic crates
Dress up items 	Cars 	Dinosaurs 	Pans 	Plastic dolls
Lego 	Small balls 	Scooter 	Plastic tubes 	Tarpaulin
Beach spades 	Buckets 	Trowels 	Skateboard 	Cardboard tubes
Guttering 	Wooden planks 	Helmet 	Aprons 	Chalk

Please try to keep these items in mind as these are the kinds of donations that our school needs as part of our Outdoor Play and Learning initiative. These items will make playtimes outside much more exciting, engaging and fun! Please give your child's class teacher any donations and these can then be passed on. Thank you for your ongoing support.

Kind regards,

**Miss Hudson and Miss Dorrington -
OPAL Leads**

OPAL Certificate this week

Piper-Lily for working hard to tidy up equipment
and encouraging others to tidy.

Our Core Values: Respect, Responsibility, Courage, Hope, Justice, Compassion, Integrity, Wisdom

The vision of the Berlesduna Academy Trust is to create and foster a culture of high aspiration, enjoyment for learning, academic success and lifelong skills amongst all pupils, regardless of their social, economic or cultural background.

Attendance percentages

for this week.

Yearly - 93.3% Weekly - 89.0%

KS1 – 88.4% KS2 - 89.3%



Descriptor	Threshold attendance	Actual attendance	Whole days of absence	Learning Hours Lost
Excellent	100%	190 days	0	0
	99%	188 days	2	10
Good	98%	186 days	4	20
	97%	184 days	6	30
	96%	182.5 days	7.5	37.5
Cause for Concern	95%	180.5 days	9.5	47.5
	94%	179 days	11	55
	93%	177 days	13	65
	92%	175 days	15	75
Unsatisfactory	91%	173 days	17	85
	90%	171 days	19	95
	89%	169 days	21	105
	88%	167 days	23	115
Serious cause for concern	87%	165 days	25	125
	86%	163 days	27	135
Critical	85%	161.5 days	28.5	142.5
	84%	159.5 days	30.5	152.5
	83%	158 days	32	160
	82%	156 days	34	170
	81%	154 days	36	180
	80%	152 days	38	190

Our Core Values: Respect, Responsibility, Courage, Hope, Justice, Compassion, Integrity, Wisdom

The vision of the Berlesduna Academy Trust is to create and foster a culture of high aspiration, enjoyment for learning, academic success and lifelong skills amongst all pupils, regardless of their social, economic or cultural background.



Reporting Absence

Please report your child's absence to the office by emailing admin@willows.essex.sch.uk or by leaving a message on the office telephone by calling 01268 470880.



The school must be informed **EVERY school day** that the child is absent.



Lateness

We have recently noticed an increase in the number of pupils arriving late to school. While we understand that some late arrivals are arranged or agreed with the Senior Leadership Team, there are a few children arriving where this is not the case.

Good punctuality helps children settle into the day calmly, take part in morning activities and hear important messages from their teacher. It is also an important life skill that supports children as they move through school and into the wider world.

We kindly ask for your support in helping your child arrive at school on time each day.

However, we do understand that there are any circumstances that can make this difficult, please do not hesitate to speak to the school office so we can support you where possible.

If you or your child have an appointment, or know that you will be arriving to school late for any other reason, **please inform the office via email your child's lunch choice for that day**. This is so the kitchen can be provided with the correct number of lunches. Should we not receive your lunch choice, we cannot guarantee your child will be able to have their preferred option. Should your child's choice be baguette, please state which filling they would like to have.

Thank you for your understanding.



Our Core Values: Respect, Responsibility, Courage, Hope, Justice, Compassion, Integrity, Wisdom

The vision of the Berlesduna Academy Trust is to create and foster a culture of high aspiration, enjoyment for learning, academic success and lifelong skills amongst all pupils, regardless of their social, economic or cultural background.



BERLESDUNA
ACADEMY TRUST



MERRYLANDS
PRIMARY SCHOOL



WHITMORE
PRIMARY SCHOOL



CRAYS HILL
PRIMARY SCHOOL



FELMORE
PRIMARY SCHOOL



CHERRY TREE
PRIMARY SCHOOL



FAIRHOUSE
PRIMARY SCHOOL



ST MARY'S C of E
PRIMARY SCHOOL



St Nicholas
Primary



Canewdon
Primary School

We are so excited to announce that our Easter Attendance Challenge began on Monday!

From this week until the end of term, all children who have arrived at school on time every day will have the chance to visit our special Attendance Shop at the end of term and choose a prize as a reward for their fantastic attendance and punctuality!

Each child will have received their own Attendance Card in class, which will be stamped every day they arrive on time. Then, at the end of each week, they will receive a gold star if they have been in every day and on time!



The more gold stars they collect, the more prizes they can choose!

We can't wait to celebrate and reward the children for their amazing effort!

Easter Attendance Challenge!
Arrive on time each day and your card will be stamped.
Earn one gold star for every full week of perfect attendance.
The more gold stars you collect, the more prizes you can choose!

Name: _____

Class: _____

Our Core Values: Respect, Responsibility, Courage, Hope, Justice, Compassion, Integrity, Wisdom

The vision of the Berlesduna Academy Trust is to create and foster a culture of high aspiration, enjoyment for learning, academic success and lifelong skills amongst all pupils, regardless of their social, economic or cultural background.





On Tuesday the 24th February, the tag rugby team attended the finals for the Basildon schools tag rugby league.

The players played some excellent rugby and we were blown away by their quick feet.

They came an impressive 4th place showing real determination and spirit.

Well done!



A group of our Young Carers attended the Healthy Schools Festival at The Brentwood Centre on Wednesday this week. During this event they had a chance to take part in various activities including promoting healthy food and nutrition, positive emotional and mental health and encouraging physical activity. We are very proud to announce that our school were presented with the following awards:

A Certificate of Achievement for the successful completion of a health improvement project in 2024/2025 linked to physical activity.

A Best Practice Award for demonstrating outstanding achievement in a Healthy Schools Project linked to physical activity.



Well done to all our pupils and staff and thank you to Mrs Hughes for her dedication to this project.

Our Core Values: Respect, Responsibility, Courage, Hope, Justice, Compassion, Integrity, Wisdom

The vision of the Berlesduna Academy Trust is to create and foster a culture of high aspiration, enjoyment for learning, academic success and lifelong skills amongst all pupils, regardless of their social, economic or cultural background.



BERLESDUNA
ACADEMY TRUST



MERRYLANDS
PRIMARY SCHOOL AND NURSERY



WHITMORE
PRIMARY SCHOOL AND NURSERY



CRAYS HILL
PRIMARY SCHOOL



FELMORE
PRIMARY SCHOOL



CHERRY TREE
PRIMARY SCHOOL AND NURSERY



FAIRHOUSE
CORPORATE PRIMARY SCHOOL



ST MARY'S CofE
PRIMARY SCHOOL



The children looked amazing in their costumes and had lots of fun being their favourite characters!

Our Core Values: Respect, Responsibility, Courage, Hope, Justice, Compassion, Integrity, Wisdom

The vision of the Berlesduna Academy Trust is to create and foster a culture of high aspiration, enjoyment for learning, academic success and lifelong skills amongst all pupils, regardless of their social, economic or cultural background.



DATES TO REMEMBER



Yr 4 Thorndon country park	9 th March
Empathy event at Civic hall	10 th March
Happy days desk top portrait photos	11 th March
Yr 2 activity afternoon	11 th March
Young carers assembly for KS2 1:45pm in Mole hall	12 th March
Yr 5 reading cafe	12 th March
Young carers day	16 th March
Theatre visit Yr 5	18 th March



We are delighted to share that we currently have spaces available in our Nursery for our September 2026 intake!

If your child is approaching nursery age and you are considering their next steps, this is a wonderful opportunity to join our friendly, nurturing, and engaging early years environment. Our Nursery provides a safe and stimulating setting where children can explore, learn, and grow through play-based activities led by our experienced and caring staff.

We welcome applications from families who would like their child to become part of our school community. If you are interested or would like more information, please contact the school office to request an application form.

We look forward to welcoming new families to The Willows Nursery!

Our Core Values: Respect, Responsibility, Courage, Hope, Justice, Compassion, Integrity, Wisdom

The vision of the Berlesduna Academy Trust is to create and foster a culture of high aspiration, enjoyment for learning, academic success and lifelong skills amongst all pupils, regardless of their social, economic or cultural background.



Starting Reception Roadshows



Is Your Little One Starting Reception in September 2026?

Come along to our Starting Reception Roadshow!

Get ready for a fun, friendly, and totally **FREE** event designed to help you to support your child feel excited and confident about starting reception.

Essex Early Years has teamed up with local schools plus education, health and care partners to bring you a lively, helpful session packed with top tips and advice.

Want to join in?

Ask your child's childminder, preschool, or nursery for details about your nearest event, or visit the Essex Talk, Listen and Cuddle website to find out more about dates and times across Essex.

Starting Reception Roadshow near you:

Where: Janet Duke Primary School - 105 Markhams Chase,
Basildon SS15 5LS

When: Wednesday 18th March - 6pm - 7.30pm



You can find out information about the event by scanning the QR code or visiting www.tlc-essex.info and searching 'Starting reception'



Follow us on social media to join our
Starting Reception Campaign



Instagram



Facebook



Our Core Values: Respect, Responsibility, Courage, Hope, Justice, Compassion, Integrity, Wisdom

The vision of the Berlesduna Academy Trust is to create and foster a culture of high aspiration, enjoyment for learning, academic success and lifelong skills amongst all pupils, regardless of their social, economic or cultural background.



BERLEDUNA
ACADEMY TRUST



MERRYLANDS
PRIMARY SCHOOL AND NURSERY



WHITMORE
PRIMARY SCHOOL AND NURSERY



CRAYS HILL
PRIMARY SCHOOL



FELMORE
PRIMARY SCHOOLS



CHERRY TREE
PRIMARY SCHOOL AND NURSERY



FAIRHOUSE
ESSEX COUNTY COUNCIL PRIMARY SCHOOL



ST MARY'S CofE
PRIMARY SCHOOL