



THE WILLOWS
PRIMARY SCHOOL AND NURSERY

Friday 27th February 2026

Headteacher's Message

Dear parents and carers,

Another week has gone but left us with a lingering hint of summer and two days that nudged 20 degrees! Days like that give a glimpse of the school in the Summer Term, warm, happy and dry!

Next week is parents' evenings and Spring Term is always my favourite. Teachers have had over half a year with their classes, progress is clear and relationships are established and grounded. Please ensure you book a meeting; it will be great to see as many of you as possible!

While the weather is warmer and drier please try to travel to school so that Church Road stays clear and easy to navigate. Towards the end of the month I am hosting our local MP, several members of Basildon and Essex councils and County Police officials to try and find solutions to the parking issues outside the school.

Have a great weekend everyone,

Mr T Robinson

Headteacher

The Willows Primary School

The Willows Primary PTA

You can now find information on any of our events under the 'PTA Events' section on the contents page of the [PA connect app](#).

For more information, or to register your support please email: pta.thewillows@gmail.com.



WELL DONE!

1R Gracie for confidently saying 'good morning' in different languages during our register.

1P Roman for demonstrating enthusiasm to begin their language journey when saying 'hello' in a different language when doing the register.

1C Wafi is a confident learner when exploring the use of new vocabulary and using this within his work. Well done Wafi :)

2D Eva is always striving to answer the register in lots of different languages. Keep it up Eva!

2H Piper-Lily for wowing the class with her knowledge of Spanish words. Well done!

2T Theo has been working hard in his phonics lessons to improve his English, reading and writing. Well done Theo! Keep it up!

3SB Scarlett for showing a keen interest in learning another language. Well done!

3D David for his effort and enthusiasm during our French lessons. Well done David!

3S Ivy for demonstrating great focus, listening and understanding of French.



4I Isabelle for showing effort and determination in her French lessons. She always tries her best and is becoming more confident in using new vocabulary. Keep up the great work!

4E Tallulah for always trying hard during French lessons and showing a flair for languages.

4RH Tommie for translating the names of different countries into French accurately and matching each one with the correct flag. Well done Tommie!

5F Georgie-Lee for impressing Mrs Harrington with your excellent French knowledge. Well done!

5J Leland for showing great enthusiasm during French lessons :)

5W Alfie for always putting in great effort with French lessons.

6B Poppy for her enthusiastic use of languages both during French lessons and registration.

6H Elijah for showing curiosity and respect when learning about French language and culture.

6F Vinny for working hard across all subjects in our first week back after half term. I have been especially impressed with your setting description in English. Well done!



Whole Class Superstar Readers of the Week

Key Stage 1: 1R-93 **Lower Key Stage 2: 3S-95** **Upper Key Stage 2: 5J-95**

Our Core Values: Respect, Responsibility, Courage, Hope, Justice, Compassion, Integrity, Wisdom

The vision of the Berlesduna Academy Trust is to create and foster a culture of high aspiration, enjoyment for learning, academic success and lifelong skills amongst all pupils, regardless of their social, economic or cultural background.



BERLESDUNA
ACADEMY TRUST



MERRYLANDS
PRIMARY SCHOOL AND NURSERY



WHITMORE
PRIMARY SCHOOL AND NURSERY



CRAYS HILL
PRIMARY SCHOOL



FELMORE
PRIMARY SCHOOL



CHERRY TREE
PRIMARY SCHOOL AND NURSERY



FAIRHOUSE
COMMUNITY PRIMARY SCHOOL



ST MARY'S CofE
PRIMARY SCHOOL

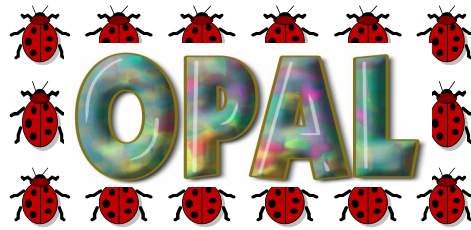
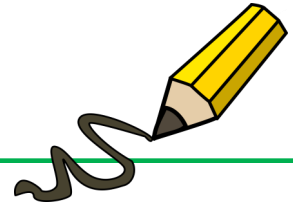
Superstar Readers of the Week

Yr1— Zara, Joseph, Tasfi
 Yr2 — Lainey, Danny, Alayna
 Yr3 — Bertie, Arya, River
 Yr4 — Louie, Aaron, Eden
 Yr5 — Harleigh, Edi, Louie
 Yr 6— Ellie-Mae, Armani, Madison



Superstar Writers of the Week

Yr1— Rafferty, Harley, Alex
 Yr2— Freya, Finn, Winnie
 Yr3 — Henry, Diana, Chimamanda
 Yr4 — Konor, Harrison, David
 Yr5 — Maya, Kiyanna, Emily
 Yr 6— Dhanush, Albie, Scarlett



Laundry basket 	Suitcase 	Wooden spoons 	Action figures 	Plastic crates 
Dress up items 	Cars 	Dinosaurs 	Pans 	Plastic dolls 
Lego 	Small balls 	Scooter 	Plastic tubes 	Tarpaulin 
Beach spades 	Buckets 	Trowels 	Skateboard 	Cardboard tubes 
Guttering 	Wooden planks 	Helmet 	Aprons 	Chalk 

Please try to keep these items in mind as these are the kinds of donations that our school needs as part of our Outdoor Play and Learning initiative. These items will make playtimes outside much more exciting, engaging and fun! Please give your child's class teacher any donations and these can then be passed on. Thank you for your ongoing support.

Kind regards,

**Miss Hudson and Miss Dorrington -
 OPAL Leads**

OPAL Certificate this week

Lucas for working hard to tidy up equipment
 and encouraging others to tidy.

Our Core Values: Respect, Responsibility, Courage, Hope, Justice, Compassion, Integrity, Wisdom

The vision of the Berlesduna Academy Trust is to create and foster a culture of high aspiration, enjoyment for learning, academic success and lifelong skills amongst all pupils, regardless of their social, economic or cultural background.



Attendance percentages

for this week.

Yearly - 93.3% Weekly - 92.8%

KS1 – 91.4% KS2 - 93.6%



Attendance Categories

Percentage	Category	Definition	Band
97-100%	Excellent	Attendance is excellent. Recognition given.	A
95-97%	Acceptable	Attendance is acceptable.	B
93-94%	Below Expected	Attendance needs to improve. Form Tutors intervene to motivate pupils to reach their target.	C
90-92%	At risk	Attendance is at risk of falling below 90%. This is when a pupil is classed as persistently absent. The Head of Year will intervene.	D
80-89%	Support	HOY and Pastoral Support will intervene to improve attendance as the pupil is persistently absent from school. <ul style="list-style-type: none"> • Parents will be notified of concerns. • Meetings will be held to identify issues and support needed. • Penalty notices may be issued to parents. 	E
51-79%	Intervention	HOY, Pastoral Support and Attendance Enforcement officers will intervene to improve attendance. <ul style="list-style-type: none"> • Parent meetings will be held • Penalty notices may be issued to parents • Enforcement Officers may be deployed to improve attendance. 	F
Under 50%	Severely Absent	Attendance is a serious concern and requires individualised plans to improve. Attendance Enforcement will work closely with school and other social care agencies to improve attendance.	G

Our Core Values: Respect, Responsibility, Courage, Hope, Justice, Compassion, Integrity, Wisdom

The vision of the Berlesduna Academy Trust is to create and foster a culture of high aspiration, enjoyment for learning, academic success and lifelong skills amongst all pupils, regardless of their social, economic or cultural background.



Reporting Absence

Please report your child's absence to the office by emailing admin@willows.essex.sch.uk or by leaving a message on the office telephone by calling 01268 470880.



The school must be informed **EVERY school day** that the child is absent.



Lateness

We are noticing increasing numbers in late arrivals to school, whilst we understand that some of these are arranged or agreed with SLT, we have lots of children that do not have arranged times.

Poor punctuality is not acceptable and can contribute to further absence. Good timekeeping is a vital life skill which will help children as they progress through their school life and out into the wider world.

Pupils who arrive late disrupt lessons and if a child misses the start of the day, they can feel unsettled and embarrassed, miss work and important messages from their class teacher.

Unauthorised lateness could result in the school referring to the Local Authority for sanctions and/or legal proceedings.

Total number of late arrivals this week:

112

If you or your child have an appointment, or know that you will be arriving to school late for any other reason, please inform the office via email your child's lunch choice for that day. This is so the kitchen can be provided with the correct number of lunches. Should we not receive your lunch choice, we cannot guarantee your child will be able to have their preferred option.

Should your child's choice be baguette, please state which filling they would like to have rather than just 'Blue' as the option.

Thank you for your understanding.



Our Core Values: Respect, Responsibility, Courage, Hope, Justice, Compassion, Integrity, Wisdom

The vision of the Berlesduna Academy Trust is to create and foster a culture of high aspiration, enjoyment for learning, academic success and lifelong skills amongst all pupils, regardless of their social, economic or cultural background.



BERLESDUNA
ACADEMY TRUST



MERRYLANDS
PRIMARY SCHOOL AND NURSERY



WHITMORE
PRIMARY SCHOOL AND NURSERY



CRAYS HILL
PRIMARY SCHOOL



FELMORE
PRIMARY SCHOOL



CHERRY TREE
PRIMARY SCHOOL AND NURSERY



FAIRHOUSE
COMMUNITY PRIMARY SCHOOL



ST MARY'S CofE
PRIMARY SCHOOL



St Nicholas
Primary



Canewdon
Primary School

DATES TO REMEMBER

Reception reading café	3 rd March
Book week	3 rd March
Open evening	4 th March
Healthy schools festival	4 th March
Yr 4 activity afternoon	5 th March
Open evening	5 th March
World book day dress up	5 th March
Science week	9 th March
Yr 4 Thorndon country park	9 th March
Empathy event at Civic hall	10 th March
Happy days desk top portrait photos	11 th March
Yr 2 activity afternoon	11 th March

Diary Dates 



We are delighted to share that we currently have spaces available in our Nursery for our September 2026 intake!

If your child is approaching nursery age and you are considering their next steps, this is a wonderful opportunity to join our friendly, nurturing, and engaging early years environment. Our Nursery provides a safe and stimulating setting where children can explore, learn, and grow through play-based activities led by our experienced and caring staff.

We welcome applications from families who would like their child to become part of our school community. If you are interested or would like more information, please contact the school office to request an application form.

We look forward to welcoming new families to The Willows Nursery!

Our Core Values: Respect, Responsibility, Courage, Hope, Justice, Compassion, Integrity, Wisdom

The vision of the Berlesduna Academy Trust is to create and foster a culture of high aspiration, enjoyment for learning, academic success and lifelong skills amongst all pupils, regardless of their social, economic or cultural background.



BERLESDUNA
ACADEMY TRUST



MERRYLANDS
PRIMARY SCHOOL AND NURSERY



WHITMORE
PRIMARY SCHOOL AND NURSERY



CRAYS HILL
PRIMARY SCHOOL



FELMORE
PRIMARY SCHOOL



CHERRY TREE
PRIMARY SCHOOL AND NURSERY



FAIRHOUSE
COMMUNITY PRIMARY SCHOOL



ST MARY'S CofE
PRIMARY SCHOOL

Starting Reception Roadshows



Is Your Little One Starting Reception in September 2026?

Come along to our Starting Reception Roadshow!

Get ready for a fun, friendly, and totally **FREE** event designed to help you to support your child feel excited and confident about starting reception.

Essex Early Years has teamed up with local schools plus education, health and care partners to bring you a lively, helpful session packed with top tips and advice.

Want to join in?

Ask your child's childminder, preschool, or nursery for details about your nearest event, or visit the Essex Talk, Listen and Cuddle website to find out more about dates and times across Essex.

Starting Reception Roadshow near you:

Where: Janet Duke Primary School - 105 Markhams Chase, Basildon SS15 5LS

When: Wednesday 18th March - 6pm - 7.30pm



You can find out information about the event by scanning the QR code or visiting www.tlc-essex.info and searching 'Starting reception'



Follow us on social media to join our **Starting Reception Campaign**



Instagram



Facebook



Our Core Values: Respect, Responsibility, Courage, Hope, Justice, Compassion, Integrity, Wisdom

The vision of the Berlesduna Academy Trust is to create and foster a culture of high aspiration, enjoyment for learning, academic success and lifelong skills amongst all pupils, regardless of their social, economic or cultural background.



BERLEDUNA
ACADEMY TRUST



MERRYLANDS
PRIMARY SCHOOL AND NURSERY



WHITMORE
PRIMARY SCHOOL AND NURSERY



CRAYS HILL
PRIMARY SCHOOL



FELMORE
PRIMARY SCHOOL



CHERRY TREE
PRIMARY SCHOOL AND NURSERY



FAIRHOUSE
COMMUNITY PRIMARY SCHOOL



ST MARY'S CofE
PRIMARY SCHOOL