



THE WILLOWS
PRIMARY SCHOOL AND NURSERY

Friday 13th February 2026



Headteacher's Message

Dear parents and carers,



Another half term has gone; this year is flying by!

I wanted to take the last newsletter of this year to thank you all for:

- Your support. One plan meetings, coffee mornings, reading clubs, activity afternoons have all been well attended. Without your support we are only half a school.
- Your understanding. Things go wrong from time to time but we do pride ourselves on trying our best to make things work and listening to you. If you have had something like this happen and one of us has had to apologise and make changes, I thank you for your patience and understanding.
- Your kindness. The donations to the PTA have been amazing. At a time when money is tight, to see the sponsorships come in is heart warming. We call ourselves one big family and we mean it. We look after each and every one of us and show kindness and empathy for all. Some of our school community have had exceptionally hard half terms and your responses to these have shown kindness and empathy.

Have a great half term everyone, look after yourselves and we will see you all after the break,

Mr T Robinson

Headteacher

The Willows Primary School



BERLESDUNA ACADEMY TRUST – VACANCIES

CHERRY TREE – DEPUTY HEADTEACHER closing date 24th February

MERRYLANDS – CATERING ASSISTANT closing date 22nd February

For more information and to apply for any of these exciting opportunities, please follow the link to our website [Vacancies - Berlesduna Academy Trust](#)

WELL DONE!

1R David for using technology safely and responsibly.

1P Leo for being fantastic in all his computing lessons and helping his friends.

1C Harry is becoming a confident user of technology. Harry had lots of input during our safer internet day discussions. Well done Harry :)

2D Kyra is always fascinated with what is happening on the SMART board and enjoys joining in with interactive phonics games and logging her travel tracker on the board. Well done Kyra :)

2H E-Safety Award—George for showing a great understanding of internet safety. Well done!

2T Jakub always tries his best in his computing lessons. He has been learning about coding and is enthusiastic to give challenges a go. Keep it up Jakub!

3SB Kyle for showing excellent ICT skills and explaining how to stay safe online.

3D Reggie for his understanding and use of coding through ICT this half term.

3S Milan for great coding of musical instruments this half term.

4I Noah for always using the internet and computers safely and responsibly. You make smart choices online — well done!"

4E Aryav for always trying hard during computing lessons and using the internet responsibly.

4RH Aaida for always trying her hardest in computing lessons.

5F Kamaldeen for completing Maths games like TTRS and Mathsbot to further your times table knowledge. Well done.

5J Denis for showing great enthusiasm during Computing lessons this half term.

5W Mikolaj for showing great awareness of how to use computers and the internet safely.

6B E-Safety Award—Scarlett for demonstrating a mature attitude to the subject of internet safety.

6H Elijah for working hard on understanding how to stay safe when using the internet!

6F E-Safety Award—Charlie for having an excellent and safe approach to using technology both inside and outside of school. Well done!



Whole Class Superstar Readers of the Week

Key Stage 1: 1P-69 Lower Key Stage 2: 4RH –67 Upper Key Stage 2: 5J-93

Our Core Values: Respect, Responsibility, Courage, Hope, Justice, Compassion, Integrity, Wisdom

The vision of the Berlesduna Academy Trust is to create and foster a culture of high aspiration, enjoyment for learning, academic success and lifelong skills amongst all pupils, regardless of their social, economic or cultural background.



BERLESDUNA
ACADEMY TRUST



MERRYLANDS
PRIMARY SCHOOL AND NURSERY



WHITMORE
PRIMARY SCHOOL AND NURSERY



CRAYS HILL
PRIMARY SCHOOL



FELMORE
PRIMARY SCHOOL



CHERRY TREE
PRIMARY SCHOOL AND NURSERY



FAIRHOUSE
COMMUNITY PRIMARY SCHOOL



ST MARY'S CofE
PRIMARY SCHOOL

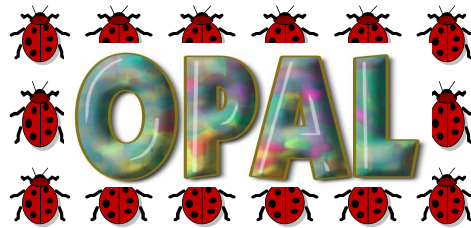
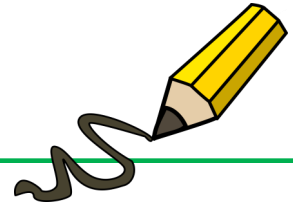
Superstar Readers of the Week

- Yr1— Billy, Maria, Kaleb
 Yr2 — Riccardo, Winnie, Tilly
 Yr3 — Cameron, Toby, Scarlett
 Yr4 — Ayaan, Lenny, Danny
 Yr5 — Nathaniel, Danaya, Alan
 Yr 6— Armani, Ellie-Mae



Superstar Writers of the Week

- Yr1— Eleeyah, Tihomir, Mollie
 Yr2— Millie, Ava, Sofie
 Yr3 — Arda, Herkus, Faye
 Yr4 — Shelbie, Maisie, Senait
 Yr5 — Scarlett, Georgie, Robert
 Yr 6— Albie, Dhanush



Laundry basket 	Suitcase 	Wooden spoons 	Action figures 	Plastic crates 
Dress up items 	Cars 	Dinosaurs 	Pans 	Plastic dolls 
Lego 	Small balls 	Scooter 	Plastic tubes 	Tarpaulin 
Beach spades 	Buckets 	Trowels 	Skateboard 	Cardboard tubes 
Guttering 	Wooden planks 	Helmet 	Aprons 	Chalk 

Please try to keep these items in mind as these are the kinds of donations that our school needs as part of our Outdoor Play and Learning initiative. These items will make playtimes outside much more exciting, engaging and fun! Please give your child's class teacher any donations and these can then be passed on. Thank you for your ongoing support.

Kind regards,

**Miss Hudson and Miss Dorrington -
OPAL Leads**

OPAL Certificate this week

Lille-Anna for working hard to tidy up equipment
and encouraging others to tidy.

Our Core Values: Respect, Responsibility, Courage, Hope, Justice, Compassion, Integrity, Wisdom

The vision of the Berlesduna Academy Trust is to create and foster a culture of high aspiration, enjoyment for learning, academic success and lifelong skills amongst all pupils, regardless of their social, economic or cultural background.





Attendance percentages

for this week.

Yearly - **93.3%** Weekly - **92.9%**

KS1 – **91.6%** KS2 - **93.5%**

Classroom Award
 Congratulations to
3S
 for achieving the highest
 attendance this week at **99.2%**

Descriptor	Threshold attendance	Actual attendance	Whole days of absence	Learning Hours Lost
Excellent	100%	190 days	0	0
	99%	188 days	2	10
Good	98%	186 days	4	20
	97%	184 days	6	30
	96%	182.5 days	7.5	37.5
Cause for Concern	95%	180.5 days	9.5	47.5
	94%	179 days	11	55
	93%	177 days	13	65
	92%	175 days	15	75
Unsatisfactory	91%	173 days	17	85
	90%	171 days	19	95
	89%	169 days	21	105
Serious cause for concern	88%	167 days	23	115
	87%	165 days	25	125
	86%	163 days	27	135
Critical	85%	161.5 days	28.5	142.5
	84%	159.5 days	30.5	152.5
	83%	158 days	32	160
	82%	156 days	34	170
	81%	154 days	36	180
	80%	152 days	38	190

Our Core Values: Respect, Responsibility, Courage, Hope, Justice, Compassion, Integrity, Wisdom

The vision of the Berlesduna Academy Trust is to create and foster a culture of high aspiration, enjoyment for learning, academic success and lifelong skills amongst all pupils, regardless of their social, economic or cultural background.



Reporting Absence

Please report your child's absence to the office by emailing admin@willows.essex.sch.uk or by leaving a message on the office telephone by calling 01268 470880.



The school must be informed **EVERY school day** that the child is absent.



Lateness

We are noticing increasing numbers in late arrivals to school, whilst we understand that some of these are arranged or agreed with SLT, we have lots of children that do not have arranged times.

Poor punctuality is not acceptable and can contribute to further absence. Good timekeeping is a vital life skill which will help children as they progress through their school life and out into the wider world.

Pupils who arrive late disrupt lessons and if a child misses the start of the day, they can feel unsettled and embarrassed, miss work and important messages from their class teacher.

Unauthorised lateness could result in the school referring to the Local Authority for sanctions and/or legal proceedings.

Total number of late arrivals this week:

119

If you or your child have an appointment, or know that you will be arriving to school late for any other reason, please inform the office via email your child's lunch choice for that day. This is so the kitchen can be provided with the correct number of lunches. Should we not receive your lunch choice, we cannot guarantee your child will be able to have their preferred option.

Should your child's choice be baguette, please state which filling they would like to have rather than just 'Blue' as the option.

Thank you for your understanding.



Our Core Values: Respect, Responsibility, Courage, Hope, Justice, Compassion, Integrity, Wisdom

The vision of the Berlesduna Academy Trust is to create and foster a culture of high aspiration, enjoyment for learning, academic success and lifelong skills amongst all pupils, regardless of their social, economic or cultural background.



BERLESDUNA
ACADEMY TRUST



MERRYLANDS
PRIMARY SCHOOL AND NURSERY



WHITMORE
PRIMARY SCHOOL AND NURSERY



CRAYS HILL
PRIMARY SCHOOL



FELMORE
PRIMARY SCHOOL



CHERRY TREE
PRIMARY SCHOOL AND NURSERY



FAIRHOUSE
COMMUNITY PRIMARY SCHOOL



ST MARY'S CofE
PRIMARY SCHOOL



St Nicholas
Primary



Canewdon
Primary School



Ryedene 1 - 0 Willows

The Willows vs Ryedene

The Willows put in a strong and determined performance against Ryedene. Logan made his debut in goal and was outstanding, pulling off some fantastic saves to keep us in the game. We were unlucky to go 1-0 down, but the team did not let their heads drop and continued to battle throughout.

Defensively, we were solid and worked hard tracking back, making sure everyone put in a real shift. When we attacked, we looked dangerous and were unfortunate not to score. Harrison and Teddie worked tirelessly on the wings, while Cameron and Noah caused plenty of problems for the defence. Alex and Enoch provided great stability in the middle, and Lenny and Oscar were non-stop from start to finish.

Ultimately, we just missed out on the goal our performance deserved. There were so many positives to take, and we now look ahead to the remaining games next term ready to finish the season strongly.



Willows vs St Therasas

We are extremely proud of how hard the girls worked during this game, unfortunately we just lost in the final quarter.

Well done for your amazing team work!



Our Core Values: Respect, Responsibility, Courage, Hope, Justice, Compassion, Integrity, Wisdom

The vision of the Berlesduna Academy Trust is to create and foster a culture of high aspiration, enjoyment for learning, academic success and lifelong skills amongst all pupils, regardless of their social, economic or cultural background.



BERLESDUNA
ACADEMY TRUST



MERRYLANDS
PRIMARY SCHOOL AND NURSERY



WHITMORE
PRIMARY SCHOOL AND NURSERY



CRAYS HILL
PRIMARY SCHOOL



FELMORE
PRIMARY SCHOOL



CHERRY TREE
PRIMARY SCHOOL AND NURSERY



FAIRHOUSE
COMMUNITY PRIMARY SCHOOL



ST MARY'S CofE
PRIMARY SCHOOL



DATES TO REMEMBER

Diary Dates

Last Day of school—Friday 13th February

Return to school—Monday 23rd February



You can now find information on any of our events under the 'PTA Events' section on the contents page of the PA connect app.

For more information, or to register your support please email: pta.thewillows@gmail.com.



We are delighted to share that we currently have spaces available in our Nursery for our September 2026 intake!

If your child is approaching nursery age and you are considering their next steps, this is a wonderful opportunity to join our friendly, nurturing, and engaging early years environment. Our Nursery provides a safe and stimulating setting where children can explore, learn, and grow through play-based activities led by our experienced and caring staff.

We welcome applications from families who would like their child to become part of our school community. If you are interested or would like more information, please contact the school office to request an application form.

We look forward to welcoming new families to The Willows Nursery!

Our Core Values: Respect, Responsibility, Courage, Hope, Justice, Compassion, Integrity, Wisdom

The vision of the Berlesduna Academy Trust is to create and foster a culture of high aspiration, enjoyment for learning, academic success and lifelong skills amongst all pupils, regardless of their social, economic or cultural background.



BERLESDUNA
ACADEMY TRUST



MERRYLANDS
PRIMARY SCHOOL AND NURSERY



WHITMORE
PRIMARY SCHOOL AND NURSERY



CRAYS HILL
PRIMARY SCHOOL



FELMORE
PRIMARY SCHOOL



CHERRY TREE
PRIMARY SCHOOL AND NURSERY



FAIRHOUSE
COMMUNITY PRIMARY SCHOOL



ST MARY'S CofE
PRIMARY SCHOOL

Starting Reception Roadshows



Is Your Little One Starting Reception in September 2026?

Come along to our Starting Reception Roadshow!

Get ready for a fun, friendly, and totally **FREE** event designed to help you to support your child feel excited and confident about starting reception.

Essex Early Years has teamed up with local schools plus education, health and care partners to bring you a lively, helpful session packed with top tips and advice.

Want to join in?

Ask your child's childminder, preschool, or nursery for details about your nearest event, or visit the Essex Talk, Listen and Cuddle website to find out more about dates and times across Essex.

Starting Reception Roadshow near you:

Where: Janet Duke Primary School - 105 Markhams Chase, Basildon SS15 5LS

When: Wednesday 18th March - 6pm - 7.30pm



You can find out information about the event by scanning the QR code or visiting www.tlc-essex.info and searching 'Starting reception'



Follow us on social media to join our **Starting Reception Campaign**



Instagram



Facebook



Our Core Values: Respect, Responsibility, Courage, Hope, Justice, Compassion, Integrity, Wisdom

The vision of the Berlesduna Academy Trust is to create and foster a culture of high aspiration, enjoyment for learning, academic success and lifelong skills amongst all pupils, regardless of their social, economic or cultural background.



BERLEDUNA
ACADEMY TRUST



MERRYLANDS
PRIMARY SCHOOL AND NURSERY



WHITMORE
PRIMARY SCHOOL AND NURSERY



CRAYS HILL
PRIMARY SCHOOL



FELMORE
PRIMARY SCHOOL



CHERRY TREE
PRIMARY SCHOOL AND NURSERY



FAIRHOUSE
COMMUNITY PRIMARY SCHOOL



ST MARY'S CofE
PRIMARY SCHOOL