



**THE WILLOWS**  
PRIMARY SCHOOL AND NURSERY



**Friday 6th February 2026**

Dear parents and carers,

Another wet week has passed; I think we are going to have to get used to rain replacing snow as the precipitation of choice for Winter now!

While we are speaking of rain, this week with the wet had highlighted just how dangerous Church Road can be when drivers do not drive and park responsibly. Yesterday, I saw cars parked entirely on the footpath meaning that pedestrians either had to go onto the mud or use the road. I saw drivers becoming angry at waiting and angry at having to weave in and out of parked cars and resorting to driving too quickly and too erratically. I have seen drivers mount the kerb and drive along the pavement.

We all have a responsibility to make sure that we park and drive responsibly. When it is wet, the traffic worsens and roads become busier. We all know this and yet we all just continue as before. Park up a few roads up. Walk. It is only rain, if you wear appropriate clothing (children can change when they get into class) a little drop of water won't bother you.

I have a delegation of people from Essex County Council, the Police, our local MP and Basildon Council coming in March to see for themselves and hopefully formulate a plan to fix this issue.

Please look out for each other and be responsible.

Have a great weekend,

Mr T Robinson

Headteacher

The Willows Primary School



# WELL DONE!

**1R Arete** for showing respect by using kind words and good manners.

**1P Lorelai** for always showing respect to your peers and adults you meet.

**1C Zara** for always treating others the way you want to be treated: with kindness, fairness, and care. For listening when others talk, using good manners. Well done Zara :)

**2D Lorenzo** holds high respect for his teacher, teaching assistant, friends and everyone he meets in school. Keep it up Lorenzo :)

**2H Alayna** for always showing respect towards the adults and your peers in the class. Well done!

**2T Leo** is a respectful boy who always looks out for his friends. He is kind, polite and always chooses to do the right thing. Well done Leo!

**3SB Chimamanda** for always showing politeness and respect to her peers and adults!

**3D Ronnie** for having respect for his learning and completing his Number Sense this week.

**3S Olivia** for always having respect for the school community, speaking respectfully and listening to adults and peers and caring for the environment.

**4I Emilie** for always showing respect to children and adults by listening carefully, being polite, and valuing others' ideas.

**4E Matthew** for always being kind, respectful and polite to adults and his peers.

**4RH Teddie** for showing excellent respect by always being kind, listening carefully to others, and treating everyone fairly!

**5F Theo** for always being incredibly respectful of adults and other children. You have incredible manners and it brightens people's day.

**5J Oscar** for showing great respect to all adults and peers this week!

**5W Lillie** for always showing respect to all adults and peers, modelling respectful behaviour every day!

**6B Poppy** for always showing due regard for the feelings, wishes and rights of her peers.

**6H Matilda** for consistently showing respect to others through kind actions, positive behaviour and a thoughtful attitude in class.

**6F David** for consistently working hard and striving to achieve his best. If you continue working this hard, you will be able to achieve your dream of owning a 3D printer. Well done!



## Whole Class Superstar Readers of the Week

**Key Stage 1: 4I-7Z   Lower Key Stage 2: 2T-12S   Upper Key Stage 2: 5J-8I**

Our Core Values: Respect, Responsibility, Courage, Hope, Justice, Compassion, Integrity, Wisdom

The vision of the Berlesduna Academy Trust is to create and foster a culture of high aspiration, enjoyment for learning, academic success and lifelong skills amongst all pupils, regardless of their social, economic or cultural background.



**BERLESDUNA**  
ACADEMY TRUST



**MERRYLANDS**  
PRIMARY SCHOOL AND NURSERY



**WHITMORE**  
PRIMARY SCHOOL AND NURSERY



**CRAYS HILL**  
PRIMARY SCHOOL



**FELMORE**  
PRIMARY SCHOOL



**CHERRY TREE**  
PRIMARY SCHOOL AND NURSERY



**FAIRHOUSE**  
COMMUNITY PRIMARY SCHOOL



**ST MARY'S CofE**  
PRIMARY SCHOOL

## Superstar Readers of the Week

Yr1— Wafi, Jayden, Theo

Yr2 — Oliver M, Riley, Marley

Yr3 — Elsie, Charles, Yanis

Yr4 — Noah, Violet, Georgia

Yr5 — Scarlett, Nola, Harrison

Yr 6— Robyn, Scarlett, Noah



## Superstar Writers of the Week

Yr1— Archie, Oscar, Tasfi

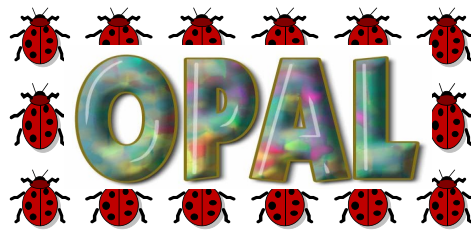
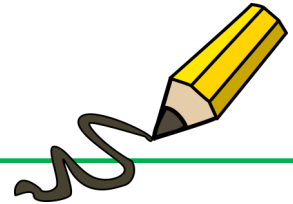
Yr2— Oliver, Sienna, George

Yr3 — Joshua, Rayaana, Lucy

Yr4 — Abigail, Reggie, Oliver

Yr5 — Olly, Aiden, Leonard

Yr 6— Nichita, Ade, Daniella



Laundry basket 	Suitcase 	Wooden spoons 	Action figures 	Plastic crates 
Dress up items 	Cars 	Dinosaurs 	Pans 	Plastic dolls 
Lego 	Small balls 	Scooter 	Plastic tubes 	Tarpaulin 
Beach spades 	Buckets 	Trowels 	Skateboard 	Cardboard tubes 
Guttering 	Wooden planks 	Helmet 	Aprons 	Chalk 

Please try to keep these items in mind as these are the kinds of donations that our school needs as part of our Outdoor Play and Learning initiative. These items will make playtimes outside much more exciting, engaging and fun! Please give your child's class teacher any donations and these can then be passed on. Thank you for your ongoing support.

Kind regards,

**Miss Hudson and Miss Dorrington -  
OPAL Leads**

## OPAL Certificate this week

**Nura** for working hard to tidy up equipment  
and encouraging others to tidy.

Our Core Values: Respect, Responsibility, Courage, Hope, Justice, Compassion, Integrity, Wisdom

The vision of the Berlesduna Academy Trust is to create and foster a culture of high aspiration, enjoyment for learning, academic success and lifelong skills amongst all pupils, regardless of their social, economic or cultural background.





## Attendance percentages

### for this week.

Yearly - 93.3% Weekly - 93.1%

KS1 – 92.7% KS2 - 93.3%

**Classroom Award**

Congratulations to

**3S**

for achieving the highest attendance this week at **97.8%**!

Descriptor	Threshold attendance	Actual attendance	Whole days of absence	Learning Hours Lost
<b>Excellent</b>	100%	190 days	0	0
	99%	188 days	2	10
<b>Good</b>	98%	186 days	4	20
	97%	184 days	6	30
	96%	182.5 days	7.5	37.5
<b>Cause for Concern</b>	95%	180.5 days	9.5	47.5
	94%	179 days	11	55
	93%	177 days	13	65
	92%	175 days	15	75
<b>Unsatisfactory</b>	91%	173 days	17	85
	90%	171 days	19	95
	89%	169 days	21	105
<b>Serious cause for concern</b>	88%	167 days	23	115
	87%	165 days	25	125
	86%	163 days	27	135
<b>Critical</b>	85%	161.5 days	28.5	142.5
	84%	159.5 days	30.5	152.5
	83%	158 days	32	160
	82%	156 days	34	170
	81%	154 days	36	180
	80%	152 days	38	190

Our Core Values: Respect, Responsibility, Courage, Hope, Justice, Compassion, Integrity, Wisdom

The vision of the Berlesduna Academy Trust is to create and foster a culture of high aspiration, enjoyment for learning, academic success and lifelong skills amongst all pupils, regardless of their social, economic or cultural background.



## Reporting Absence

Please report your child's absence to the office by emailing [admin@willows.essex.sch.uk](mailto:admin@willows.essex.sch.uk) or by leaving a message on the office telephone by calling 01268 470880.



The school must be informed **EVERY school day** that the child is absent.



## Lateness

We are noticing increasing numbers in late arrivals to school, whilst we understand that some of these are arranged or agreed with SLT, we have lots of children that do not have arranged times.

Poor punctuality is not acceptable and can contribute to further absence. Good timekeeping is a vital life skill which will help children as they progress through their school life and out into the wider world.

Pupils who arrive late disrupt lessons and if a child misses the start of the day, they can feel unsettled and embarrassed, miss work and important messages from their class teacher.

Unauthorised lateness could result in the school referring to the Local Authority for sanctions and/or legal proceedings.

Total number of late arrivals this week:

**125**

If you or your child have an appointment, or know that you will be arriving to school late for any other reason, please inform the office via email your child's lunch choice for that day. This is so the kitchen can be provided with the correct number of lunches. Should we not receive your lunch choice, we cannot guarantee your child will be able to have their preferred option.

Should your child's choice be baguette, please state which filling they would like to have.

Thank you for your understanding.



Our Core Values: Respect, Responsibility, Courage, Hope, Justice, Compassion, Integrity, Wisdom

The vision of the Berlesduna Academy Trust is to create and foster a culture of high aspiration, enjoyment for learning, academic success and lifelong skills amongst all pupils, regardless of their social, economic or cultural background.



**BERLESDUNA**  
ACADEMY TRUST



**MERRYLANDS**  
PRIMARY SCHOOL AND NURSERY



**WHITMORE**  
PRIMARY SCHOOL AND NURSERY



**CRAYS HILL**  
PRIMARY SCHOOL



**FELMORE**  
PRIMARY SCHOOL



**CHERRY TREE**  
PRIMARY SCHOOL AND NURSERY



**FAIRHOUSE**  
COMMUNITY PRIMARY SCHOOL



**ST MARY'S CofE**  
PRIMARY SCHOOL



**St Nicholas**  
Primary



**Canewdon**  
Primary School

# DATES TO REMEMBER

Children's mental health week	9 <sup>th</sup> February
Safer Internet day	10 <sup>th</sup> February
Library team to visit Nursery	10 <sup>th</sup> February
Yr 6 Parent calls	10 <sup>th</sup> February
KS2 Cross country – James Hornsby	12 <sup>th</sup> February
Trust Spelling bee - Fairhouse	12 <sup>th</sup> February
Yr 1 Superhero day	13 <sup>th</sup> February
Yr 6 Enrichment trip - Golf	13 <sup>th</sup> February
PTA Non uniform day	13 <sup>th</sup> February
Last day of term	13 <sup>th</sup> February

Diary Dates

## The Willows Primary PTA

You can now find information on any of our events under the 'PTA Events' section on the contents page of the PA connect app.



For more information, or to register your support please email: [pta.thewillows@gmail.com](mailto:pta.thewillows@gmail.com).

## Taking holidays in term time

Improving school attendance is a key priority for all schools across Essex. Missing school can negatively impact a pupil's progress and stop them from reaching their true academic potential.

If you feel that there are exceptional circumstances, you should make an application to your the school. You must get permission from the headteacher if you want to take your child out of school during term time. You may be asked to provide a form of evidence dependant on the circumstances.

You could be fined or face legal action for taking your child out of school during term time without the school's permission.

Any leave of absence request should be completed on the PA connect app. Once this has been done, your request will be reviewed and then a member of staff will be in contact with you regarding the outcome.



Our Core Values: Respect, Responsibility, Courage, Hope, Justice, Compassion, Integrity, Wisdom

The vision of the Berlesduna Academy Trust is to create and foster a culture of high aspiration, enjoyment for learning, academic success and lifelong skills amongst all pupils, regardless of their social, economic or cultural background.



**BERLESDUNA**  
ACADEMY TRUST



**MERRYLANDS**  
PRIMARY SCHOOL AND NURSERY



**WHITMORE**  
PRIMARY SCHOOL AND NURSERY



**CRAYS HILL**  
PRIMARY SCHOOL



**FELMORE**  
PRIMARY SCHOOL



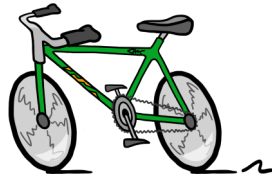
**CHERRY TREE**  
PRIMARY SCHOOL AND NURSERY



**FAIRHOUSE**  
COMMUNITY PRIMARY SCHOOL



**ST MARY'S CofE**  
PRIMARY SCHOOL



### **Level 1 & 2 Bikeability Training**

Well done to the second group of Year 5 pupils to take part in the Level 1 & 2 Bikeability training this week. Despite the difficult weather conditions on the first day of training they all did really well!

Mrs Smith

Essex County Council  
Children and Families

## Starting Reception Roadshows

**Is Your Little One Starting Reception in September 2026?**  
**Come along to our Starting Reception Roadshow!**

Get ready for a fun, friendly, and totally **FREE** event designed to help you to support your child feel excited and confident about starting reception.

Essex Early Years has teamed up with local schools plus education, health and care partners to bring you a lively, helpful session packed with top tips and advice.

**Want to join in?**  
Ask your child's childminder, preschool, or nursery for details about your nearest event, or visit the Essex Talk, Listen and Cuddle website to find out more about dates and times across Essex.

**Starting Reception Roadshow near you:**

Where: Janet Duke Primary School - 105 Markhams Chase, Basildon SS15 5LS

When: Wednesday 18th March - 6pm - 7.30pm

You can find out information about the event by scanning the QR code or visiting [www.tlc-essex.info](http://www.tlc-essex.info) and searching 'Starting reception'

Follow us on social media to join our **Starting Reception Campaign**

Instagram Facebook



## BERLESDUNA ACADEMY TRUST – VACANCIES

CHERRY TREE – DEPUTY HEADTEACHER closing date 24<sup>th</sup> February  
ST NICHOLAS – SEND MIDDAY ASSISTANT closing date 9<sup>th</sup> February  
WHITMORE – LEARNING SUPPORT ASSISTANT closing date 12<sup>th</sup> February  
WHITMORE – MIDDAY ASSISTANT closing date 12<sup>th</sup> February

For more information and to apply for any of these exciting opportunities, please follow the link to our website [Vacancies - Berlesduna Academy Trust](#)

Our Core Values: Respect, Responsibility, Courage, Hope, Justice, Compassion, Integrity, Wisdom

The vision of the Berlesduna Academy Trust is to create and foster a culture of high aspiration, enjoyment for learning, academic success and lifelong skills amongst all pupils, regardless of their social, economic or cultural background.

