



**THE WILLOWS**  
PRIMARY SCHOOL AND NURSERY



**Friday 30th January 2026**

Dear parents and carers,

Another week has flown by and to keep the theme of the month, we are seeing it out with some rain!

Speaking of rain and poor weather, please take care when travelling to and from school.

We are still having problems with parking and driving outside the school. Please also be aware, parking on yellow lines can restrict access for some vehicles, including ambulances, so please leave home with plenty of time to arrive to school on time and ready for the day!

During the colder and wetter months please also ensure that your child/ren have appropriate clothing and footwear. We will always try to go outside no matter the weather and as soon as here is a gap, and so having the right clothing is important. Rain, cold and snow won't stop us!

With only two weeks to go until half term, I wanted to let you know that our sports coaches will be running a half term camp. Information can be found via PA connect, under the clubs section and payment will be direct to Your Sport.

Have a great weekend everyone,

Mr T Robinson

Headteacher

The Willows Primary School

HAPPY  
Weekend

# WELL DONE!

**1R Rayden** for showing integrity by always trying to do the right thing.

**1P Mathias** for always knowing right from wrong and helping others make the right choices.

**1C Ella** for always doing the right thing even when no one is watching and for acting with kindness and respect. Well done Ella :)

**2D Lily** prides herself in being true to herself as an individual and shows great integrity in school and amongst her peers. Keep it up Lily!

**2H Scarlett** for always showing integrity through being honest and telling the truth and having a good sense of right and wrong. Well done!

**2T Nicolle** is an honest girl who will always tell the truth. She is a responsible member of our class and looks after her peers. Well done Nicolle!

**3SB Joshua** for being a kind and responsible member of the class, a great friend and always trying your best.

**3D Georgie** for his commitment and attendance in school and his effort during number sense this week. Well done Georgie!

**3S Aiden** for always showing respect for his peers, environment and learning. Aiden always tries to make the right choice, even when others are not. That is very brave.



**4I Mila** for always showing integrity with her honesty and strong values in everyday actions and she can always be trusted to do the right thing.

**4E Sobechukwu** for being always showing integrity by being honest even when it's difficult.

**4RH Leia** for showing integrity and being a fantastic role model to others. Well done and keep it up!

**5F Liana** for outstanding integrity—consistently doing the right thing, even when no one is watching.

**5J Thomas** for always showing great integrity and sportsmanship on the playground and in PE activities.

**5W Reggie** for showing outstanding integrity and sportsmanship during tag rugby—making sure everyone was included, supporting all your team mates and being an excellent leader!

**6B Milana** for always acting with integrity and reflecting the strong moral principles of The Willows core values.

**6H Jerome** for settling into his new school amazingly well, Jerome has already started to display the core values of the school to others!

**6F Macie** for being a kind, caring and considerate member of the class! Keep on being you!



## Whole Class Superstar Readers of the Week

**Key Stage 1: 2D-92**    **Lower Key Stage 2: 3SB-89**    **Upper Key Stage 2: 5J-93**

Our Core Values: Respect, Responsibility, Courage, Hope, Justice, Compassion, Integrity, Wisdom

The vision of the Berlesduna Academy Trust is to create and foster a culture of high aspiration, enjoyment for learning, academic success and lifelong skills amongst all pupils, regardless of their social, economic or cultural background.



**BERLESDUNA**  
ACADEMY TRUST



**MERRYLANDS**  
PRIMARY SCHOOL AND NURSERY



**WHITMORE**  
PRIMARY SCHOOL AND NURSERY



**CRAYS HILL**  
PRIMARY SCHOOL



**FELMORE**  
PRIMARY SCHOOL



**CHERRY TREE**  
PRIMARY SCHOOL AND NURSERY



**FAIRHOUSE**  
COMMUNITY PRIMARY SCHOOL



**ST MARY'S CofE**  
PRIMARY SCHOOL

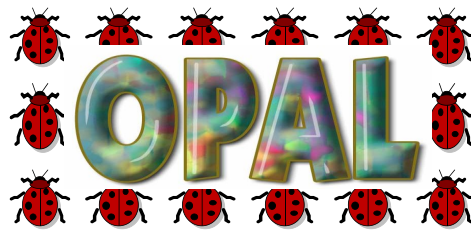
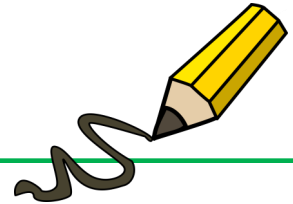
## Superstar Readers of the Week

- Yr1 — Luna, Rainee, Ella  
 Yr2 — Rain, Wilson, Elza  
 Yr3 — Kairo, Dolce, Maria  
 Yr4 — Leighton, Nelly, Erin  
 Yr5 — William, Albie, Beau  
 Yr 6 — Taylor, Ebben, Sienna



## Superstar Writers of the Week

- Yr1 — Nicolas, Ioana, Harley  
 Yr2 — Olivia, Darcey, Lucas  
 Yr3 — Clementine, Lewis, Hope  
 Yr4 — Teddy, Violette, Mia  
 Yr5 — Ella, Ilinca, Dominic  
 Yr 6 — Bella, Brook, Milla



Laundry basket 	Suitcase 	Wooden spoons 	Action figures 	Plastic crates 
Dress up items 	Cars 	Dinosaurs 	Pans 	Plastic dolls 
Lego 	Small balls 	Scooter 	Plastic tubes 	Tarpaulin 
Beach spades 	Buckets 	Trowels 	Skateboard 	Cardboard tubes 
Guttering 	Wooden planks 	Helmet 	Aprons 	Chalk 

Please try to keep these items in mind as these are the kinds of donations that our school needs as part of our Outdoor Play and Learning initiative. These items will make playtimes outside much more exciting, engaging and fun! Please give your child's class teacher any donations and these can then be passed on. Thank you for your ongoing support.

Kind regards,

**Miss Hudson and Miss Dorrington -  
OPAL Leads**

## OPAL Certificate this week

**Dottie** for working hard to tidy up equipment  
and encouraging others to tidy.

Our Core Values: Respect, Responsibility, Courage, Hope, Justice, Compassion, Integrity, Wisdom

The vision of the Berlesduna Academy Trust is to create and foster a culture of high aspiration, enjoyment for learning, academic success and lifelong skills amongst all pupils, regardless of their social, economic or cultural background.





## Attendance percentages

### for this week.

Yearly - **93.3%** Weekly - **92.6%**

KS1 – **92.1%** KS2 - **92.8%**

**Classroom Award**  
 Congratulations to  
**2D**  
 for achieving the highest  
 attendance this week at **97.5%**!

Descriptor	Threshold attendance	Actual attendance	Whole days of absence	Learning Hours Lost
<b>Excellent</b>	100%	190 days	0	0
	99%	188 days	2	10
<b>Good</b>	98%	186 days	4	20
	97%	184 days	6	30
	96%	182.5 days	7.5	37.5
<b>Cause for Concern</b>	95%	180.5 days	9.5	47.5
	94%	179 days	11	55
	93%	177 days	13	65
	92%	175 days	15	75
<b>Unsatisfactory</b>	91%	173 days	17	85
	90%	171 days	19	95
	89%	169 days	21	105
<b>Serious cause for concern</b>	88%	167 days	23	115
	87%	165 days	25	125
	86%	163 days	27	135
<b>Critical</b>	85%	161.5 days	28.5	142.5
	84%	159.5 days	30.5	152.5
	83%	158 days	32	160
	82%	156 days	34	170
	81%	154 days	36	180
	80%	152 days	38	190

Our Core Values: Respect, Responsibility, Courage, Hope, Justice, Compassion, Integrity, Wisdom

The vision of the Berlesduna Academy Trust is to create and foster a culture of high aspiration, enjoyment for learning, academic success and lifelong skills amongst all pupils, regardless of their social, economic or cultural background.



## Reporting Absence

Please report your child's absence to the office by emailing [admin@willows.essex.sch.uk](mailto:admin@willows.essex.sch.uk) or by leaving a message on the office telephone by calling 01268 470880.



The school must be informed **EVERY school day** that the child is absent.



## Lateness

We are noticing increasing numbers in late arrivals to school, whilst we understand that some of these are arranged or agreed with SLT, we have lots of children that do not have arranged times.

Poor punctuality is not acceptable and can contribute to further absence. Good timekeeping is a vital life skill which will help children as they progress through their school life and out into the wider world.

Pupils who arrive late disrupt lessons and if a child misses the start of the day, they can feel unsettled and embarrassed, miss work and important messages from their class teacher.

Unauthorised lateness could result in the school referring to the Local Authority for sanctions and/or legal proceedings.

Total number of late arrivals this week:

**173**

If you or your child have an appointment, or know that you will be arriving to school late for any other reason, please inform the office via email your child's lunch choice for that day. This is so the kitchen can be provided with the correct number of lunches. Should we not receive your lunch choice, we cannot guarantee your child will be able to have their preferred option.

Should your child's choice be baguette, please state which filling they would like to have.

Thank you for your understanding.



Our Core Values: Respect, Responsibility, Courage, Hope, Justice, Compassion, Integrity, Wisdom

The vision of the Berlesduna Academy Trust is to create and foster a culture of high aspiration, enjoyment for learning, academic success and lifelong skills amongst all pupils, regardless of their social, economic or cultural background.



**BERLESDUNA**  
ACADEMY TRUST



**MERRYLANDS**  
PRIMARY SCHOOL AND NURSERY



**WHITMORE**  
PRIMARY SCHOOL AND NURSERY



**CRAYS HILL**  
PRIMARY SCHOOL



**FELMORE**  
PRIMARY SCHOOL



**CHERRY TREE**  
PRIMARY SCHOOL AND NURSERY



**FAIRHOUSE**  
COMMUNITY PRIMARY SCHOOL



**ST MARY'S CofE**  
PRIMARY SCHOOL



**St Nicholas**  
Primary



**Canewdon**  
Primary School

# DATES TO REMEMBER

Reception screenings	2 <sup>nd</sup> February
Whole school review	3 <sup>rd</sup> February
Yr 3 Activity afternoon	4 <sup>th</sup> February
Yr 5/6 Bikeability	5 <sup>th</sup> February
Yr 3 Colchester castle	5 <sup>th</sup> February
Reception Essex fire visit	6 <sup>th</sup> February
Children's mental health week	9 <sup>th</sup> February
Safer Internet day	10 <sup>th</sup> February
Library team to visit Nursery	10 <sup>th</sup> February
Yr 6 Parent calls	10 <sup>th</sup> February
KS2 Cross country - James Hornsby	12 <sup>th</sup> February
Trust Spelling bee - Fairhouse	12 <sup>th</sup> February
Yr 1 Superhero day	13 <sup>th</sup> February
Yr 6 Enrichment trip - Golf	13 <sup>th</sup> February
PTA Non uniform day	13 <sup>th</sup> February

Diary Dates

## The Willows Primary PTA

You can now find information on any of our events under the 'PTA Events' section on the contents page of the **PA connect app**.

For more information, or to register your support please email: [pta.thewillows@gmail.com](mailto:pta.thewillows@gmail.com).



## Taking holidays in term time

Improving school attendance is a key priority for all schools across Essex. Missing school can negatively impact a pupil's progress and stop them from reaching their true academic potential.

If you feel that there are **exceptional circumstances**, you should make an application to your the school. You must get permission from the headteacher if you want to take your child out of school during term time. You may be asked to provide a form of evidence dependant on the circumstances.

You could be fined or face legal action for taking your child out of school during term time without the school's permission.

Any **leave of absence request** should be completed on the **PA connect app**. Once this has been done, your request will be reviewed and then a member of staff will be in contact with you regarding the outcome.



Our Core Values: Respect, Responsibility, Courage, Hope, Justice, Compassion, Integrity, Wisdom

The vision of the Berlesduna Academy Trust is to create and foster a culture of high aspiration, enjoyment for learning, academic success and lifelong skills amongst all pupils, regardless of their social, economic or cultural background.



**CHERRY TREE**  
PRIMARY SCHOOL AND NURSERY



**FAIRHOUSE**  
COMMUNITY PRIMARY SCHOOL



**ST MARY'S CofE**  
PRIMARY SCHOOL



**BERLESDUNA**  
ACADEMY TRUST



**MERRYLANDS**  
PRIMARY SCHOOL AND NURSERY



**WHITMORE**  
PRIMARY SCHOOL AND NURSERY



**CRAYS HILL**  
PRIMARY SCHOOL



**FELMORE**  
PRIMARY SCHOOL

# Communication at The Willows

At The Willows, we pride ourselves on the multiple lines of communication that we offer. Here is a simple guide on how to best use them!

## The Willows Parents App (PA Connect)

The place where you can find everything!

You can use the app to:

- Check menus
- Check upcoming dates
- Look at calendar events & term dates
- Notify us of an absence, a medical appointment or to request a holiday
- Pay for trips/events



## Class Charts

This is to communicate directly with your child's teacher for all non-urgent things. You can use this to:

- Notify your child's teacher directly of something that is not urgent (lost items etc)
  - Ask a non-urgent question (e.g. Ask about a trip that is the future)
- Inform the teacher of something about your child that may help support them (e.g. A pet passed away and they may be upset)

## The School Admin Email- [admin@willows.essex.sch.uk](mailto:admin@willows.essex.sch.uk)

How to get a message to the right person.

This is to be used for all urgent and confidential enquiries! For example:

- To notify us of anything urgent (e.g. Late pick ups, changes to adults picking up, absences if you cannot use the app)
  - Notify us of anything confidential (safeguarding, personal information)
    - Ask to speak with SLT or the Inclusion Team about your child
- Ask a question about something wider than your child's class (e.g. Staffing, Health & Safety etc)
  - Speak with someone about a concern that you have
    - Talk to us about anything financial



**Using the correct method of communicating with us will hugely improve the speed in which we can deal with your issue as it will go the right person at the right time!**

Thank you for your cooperation.

The Willows



## BERLESDUNA ACADEMY TRUST – VACANCIES

CHERRY TREE – CLASS TEACHER closing date 5<sup>th</sup> February

CHERRY TREE – FIXED TERM CLASS TEACHER closing date 5<sup>th</sup> February

ST MARYS – CLASS TEACHER closing date 4<sup>th</sup> February

For more information and to apply for any of these exciting opportunities, please follow the link to our website [Vacancies - Berlesduna Academy Trust](#)

Our Core Values: Respect, Responsibility, Courage, Hope, Justice, Compassion, Integrity, Wisdom

The vision of the Berlesduna Academy Trust is to create and foster a culture of high aspiration, enjoyment for learning, academic success and lifelong skills amongst all pupils, regardless of their social, economic or cultural background.



BERLESDUNA  
ACADEMY TRUST



MERRYLANDS  
PRIMARY SCHOOL AND NURSERY



WHITMORE  
PRIMARY SCHOOL AND NURSERY



CRAYS HILL  
PRIMARY SCHOOL



FELMORE  
PRIMARY SCHOOL



CHERRY TREE  
PRIMARY SCHOOL AND NURSERY



FAIRHOUSE  
COMMUNITY PRIMARY SCHOOL



ST MARY'S CofE  
PRIMARY SCHOOL